



Ø 2 - 10 mm / 8 - 1080 m<sup>3</sup>/h

HiFlux DVS Coarse Filters are mainly used as suction filters in salt- and freshwater cooling systems for protecting pumps and heat exchangers.

The filter is manufactured in accordance with DVS 32012 (Danish Shipyard Standard).

A compact design which is supplied with straight flow as standard. The filter can also be supplied with right-left flow. For bottom intake see data sheet for DVS 32013.

The filter housing is manufactured in hot-galvanised steel and can be fitted with zinc anodes for increased corrosion protection.

The filter strainer is supplied as standard with Ø3 mm, Ø6 mm, Ø8 mm and Ø10 mm filtrations. The material is hot-galvanised steel or acid-proof steel EN 1.4404. The strainers made from hot-galvanised steel are fitted with zinc anodes for increased corrosion protection and increased life.

All filters are supplied with a ball-type air vent and a hinged bronze cover fastening.

The filters are used to a large extent by shipyards as cooling water, sea water and bilge water filters and meet the requirements of all the recognised classification societies.



## Data

Working pressure:	2,5 bar
Testing pressure:	3,75 bar
Differential pressure clean:	0,1 bar
Max. differential pressure:	2,0 bar
Max. working temperature:	90° C.
Flange connection:	EN 1092-1
Filter housing material:	Hot galvanised steel
Strainer material:	Hot galvanised steel or acid-proof steel EN 1.4404
Mesh size strainer:	Hot galvanised steel: 3-10 mm Acid proof EN 1.4404: 2-10 mm
Cover fastening:	Bronze ring bolt and wing nut, stainless steel axle

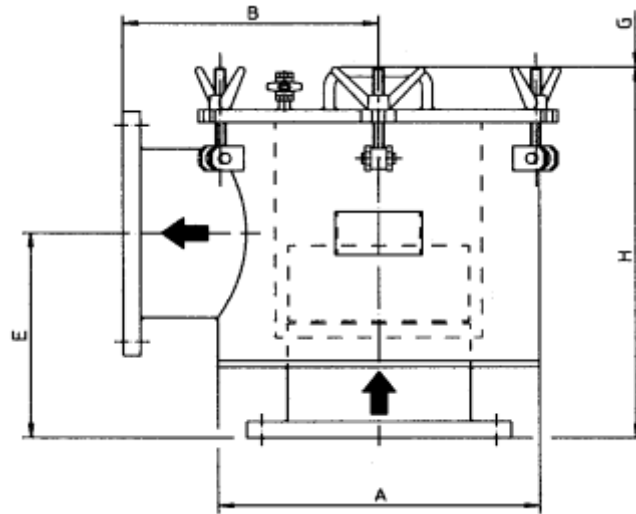
As an option zinc anodes can be fitted in the filter housing.

Special versions with other surface coatings – including epoxy-coating and vulcanised natural rubber – can be made according to specifications from the customer and classification societies.

Other special versions with regard to building-in, capacity, pressure, etc., can be made in co-operation with our design department.



# DVS 32013 Coarse Filters



Type	A	B	E	G	H	Airventilation	Connection	Wt.	No. of fittings
	mm	mm	mm	mm	mm	valve	DN	kg	
<b>32013-50</b>	168,3	155	200	90	372	R <sub>p</sub> <sup>3/8</sup>	50	16	2
<b>32013-65</b>	193,7	170	210	110	392	R <sub>p</sub> <sup>3/8</sup>	65	21	2
<b>32013-80</b>	219,1	195	225	130	417	R <sub>p</sub> <sup>3/8</sup>	80	27	2
<b>32013-100</b>	244,5	210	240	145	440	R <sub>p</sub> <sup>3/8</sup>	100	32	2
<b>32013-125</b>	273	235	255	170	465	R <sub>p</sub> <sup>3/8</sup>	125	41	4
<b>32013-150</b>	323,9	255	275	200	500	R <sub>p</sub> <sup>3/8</sup>	150	58	4
<b>32013-200</b>	406,4	320	295	230	537	R <sub>p</sub> <sup>3/8</sup>	200	95	4
<b>32013-250</b>	480	425	330	500	600	R <sub>p</sub> <sup>3/8</sup>	250	134	6
<b>32013-300</b>	558	465	365	600	662	R <sub>p</sub> <sup>3/8</sup>	300	171	6
<b>32013-350</b>	609	500	450	650	775	R <sub>p</sub> <sup>3/8</sup>	350	232	6
<b>32013-400</b>	680	560	486	750	865	R <sub>p</sub> <sup>3/8</sup>	400	307	8
<b>32013-450</b>	770	610	519	850	900	R <sub>p</sub> <sup>3/8</sup>	450	409	8

Capacity  
(at a viscosity of 1 cSt  
and differential pressure of 0.1 bar)

Type	Strainer area	Capacity in m <sup>3</sup> /h for filtration in Ø mm				
	cm <sup>2</sup>	2 mm	3 mm	6 mm	8 mm	10 mm
<b>32013-50</b>	430	8	13	16	16	16
<b>32013-65</b>	590	14	22	27	27	27
<b>32013-80</b>	810	20	31	38	38	38
<b>32013-100</b>	970	35	52	64	64	64
<b>32013-125</b>	1250	53	80	98	98	98
<b>32013-150</b>	1660	78	117	143	143	143
<b>32013-200</b>	2200	132	198	241	241	241
<b>32013-250</b>	3270	210	315	383	383	383
<b>32013-300</b>	4900	298	447	542	542	542
<b>32013-350</b>	6050	358	537	652	652	652
<b>32013-400</b>	8010	469	704	854	854	854
<b>32013-450</b>	9420	594	891	1080	1080	1080