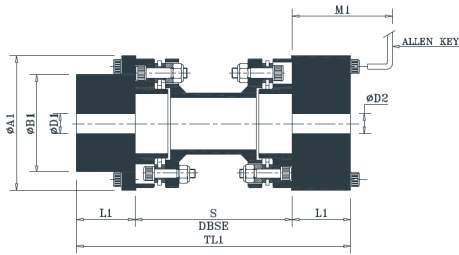
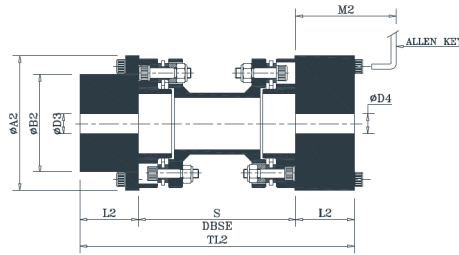


DISC-O-FLEX SPACER COUPLINGS TYPE - REM



HUB TYPE-I

HUB TYPE-II



HUB TYPE-III

HUB TYPE-IV

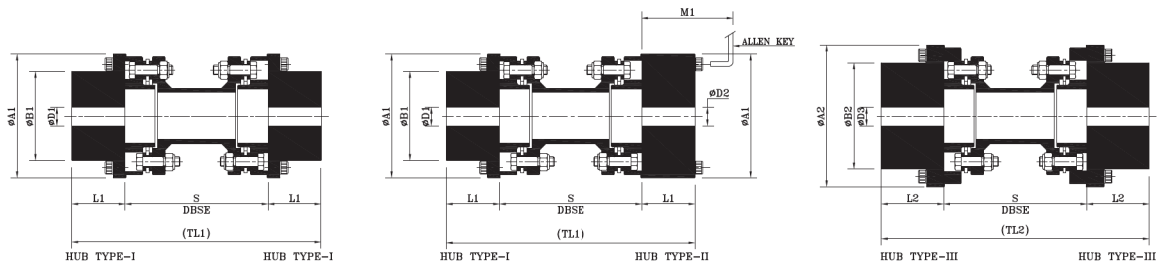
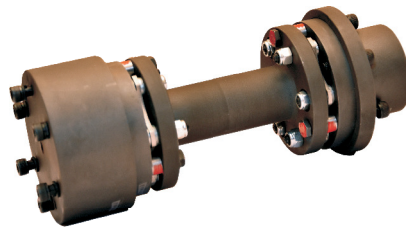
TECHNICAL DATA

Coup. Size	kW at 100 rpm	Torque Nm	Max. Speed RPM	Bore												Min. DBSE 'S'	STD DBSE	TL1 (STD DBSE)	TL2 (STD DBSE)	M1	M2	Weight in Kg Approx.		M.I. (MR ²) in Kg. m ² Approx		Tors. Stiff. MNm/rad Approx.		
				Min.				Max.				A1	A2	B1	B2							L1	L2	Min. DBSE 'S'	Per Mtr. Extra 'S'		Min. DBSE 'S'	Per Mtr. Extra 'S'
				D1 & D2 (Type I/II)	D3 & D4 (Type III/IV)	D1 (Type I)	D2 (Type II)	D3 (Type III)	D4 (Type IV)																			
8	1.00	95	7500	8	10	24	42	38	48	80	69	90	40	55	30	40	100	160, 200, 240	180, 220, 260	80	90	1.48	1.71	0.001	0.001	0.018		
25	2.40	229	7000	10	15	38	48	48	72	89	90	108	55	70	40	45	140, 180	180, 220, 260	190, 230, 270	90	105	2.99	3.21	0.003	0.001	0.043		
65	6.5	621	6000	15	20	48	72	65	92	103	108	135	70	86	45	55	140	230, 270, 340	250, 290, 360	105	120	6.30	7.77	0.008	0.003	0.100		
125	12.6	1203	5200	20	25	65	92	80	102	128	135	152	86	108	55	60	180, 250	250, 290, 360	260, 300, 370	120	125	12.49	7.43	0.026	0.006	0.232		
165	20.0	1910	4800	25	30	80	102	90	120	148	152	182	108	130	60	70	180, 250	300, 370	320, 390	125	135	19.40	11.38	0.051	0.012	0.395		
370	36.3	3466	4400	30	45	90	120	108	140	161	182	197	130	158	70	90	180	320, 390	360, 430	135	155	31.49	15.23	0.116	0.025	0.749		
390	58.5	5586	4200	45	55	108	140	127	155	175	197	225	158	181	90	95	250	360, 430	370, 440	155	160	48.54	16.02	0.225	0.047	1.239		
790	74.2	7086	4000	55	65	127	155	140	178	180	225	250	181	206	95	105	180, 250	370, 440	390, 460	160	170	69.50	28.24	0.408	0.076	1.649		
1025	108.7	10380	3800	65	70	140	178	155	192	194	250	275	206	223	105	115	250	460	480	170	190	97.98	28.23	0.708	0.079	2.179		
1425	152.2	14534	3700	70	75	155	192	170	212	213	275	300	223	248	115	130	250	480	510	190	215	127.25	30.86	1.113	0.134	3.350		
1880	196.0	18717	3600	75	80	170	212	190	255	225	300	375	248	280	130	145	250	510	540	215	245	172.28	40.25	1.787	0.168	4.271		

Notes

- * All dimensions are in mm. Unless otherwise specified.
- * For vertical installation contact RATHI.
- * Non Standard DBSE available on request.
- * Please specify type of hubs (I, II, III, IV combination)
- * Weight, M.I. & stiffness are at max. bores with min. std DBSE with one I/II hub combination.
- * Available for non-sparking applications on request.
- * Min. Bores specified are for hub type I/II, for hub type III/IV consult Rathi.
- * Coupling with taper bush also available on request.
- * M1 is applicable for hub type II. M2 is applicable for hub type IV.
- * MAX. MIS-ALIGNMENTS ARE AS FOLLOWS
 AXIAL : FOR SIZE 8 TO 370 : ± 1 mm & FOR SIZE 390 TO 1880 : ± 2 mm
 ANGULAR / DISC PACK : 0.75°
 RADIAL / PARALLEL : 0.013 mm / mm
- * Consult RATHI for Max Bore with Square Key.

DISC-O-FLEX SPACER COUPLINGS TYPE - REMH



TECHNICAL DATA

Coup. Size	KW at 100 rpm	Torque KNm	Max. Speed RPM	Bore						Min. DBSE 'S'	ØA1	ØA2	ØB1	ØB2	L1	L2	STD DBSE	TL1@ (STD DBSE)	TL2@ (STD DBSE)	M1	Weight In Kg Approx.		M.I. (MR2) in Kg. m2 Approx		Tors. Stiff. MNm/rad Approx.
				Min.			Max.														Min. DBSE 'S'	Per Mtr. Extra 'S'	Min. DBSE 'S'	Per Mtr. Extra 'S'	
				ØD1 & ØD2 (Type III)	ØD3 (Type III)	ØD1 (Type I)	ØD2 (Type II)	ØD3 (Type III)	Min. DBSE 'S'																
2600	260	24.83	4600	80	85	185	210	200	233	325	340	260	280	150	160	300	600	620	315	155.0	54.13	2.07	0.20	9.056	
3350	335	31.99	4100	85	95	200	220	215	269	340	360	280	300	160	170	460	780	800	335	187.7	71.98	2.87	0.39	14.318	
4250	425	40.58	3900	95	95	215	235	230	280	360	400	300	325	170	185	460	800	830	350	228.7	71.97	3.97	0.08	17.415	
6250	625	59.68	3400	95	98	230	260	240	293	400	420	325	340	185	190	460	830	840	375	280.0	96.04	6.11	0.92	32.620	
7600	760	72.57	3200	98	100	240	275	265	313	420	450	340	370	190	210	460	840	880	390	325.4	96.13	7.79	0.92	40.507	
8700	870	83.07	2900	100	100	265	300	275	319	450	465	370	385	210	220	460	880	900	425	396.2	108.70	10.95	1.05	47.082	
9100	1000	95.49	2600	100	102	275	305	290	343	465	480	385	400	220	230	460	900	920	435	443.1	101.59	13.45	1.42	60.677	
9115	1150	109.81	2500	102	102	290	315	305	349	480	510	410	415	230	240	460	920	940	440	500.1	117.33	16.57	1.67	66.126	
9130	1300	124.14	2400	102	105	305	335	355	371	510	530	415	445	240	280	460	940	1020	460	550.7	134.49	19.90	1.99	78.900	
9170	1700	162.33	2300	105	105	355	370	380	403	530	600	445	512	280	300	460	1020	1060	495	620.9	145.46	25.49	2.89	105.524	
9190	1900	181.43	2200	105	110	380	395	430	431	600	650	512	560	300	310	460	1060	1080	520	925.4	161.58	46.52	3.31	139.537	
9210	2100	200.53	2100	110	115	390	425	450	439	650	760	560	650	310	340	460	1080	1140	550	1202.9	176.86	69.46	3.68	159.483	

Max. Mis-alignment

Size	2600	3350	4250	6250	7600	8700	9100	9115	9130	9170	9190	9210
Axial ± (mm)	3.5	3.9	4.5	3.2	3.7	4.3	4.8	5.2	5.5	5.8	6.0	6.2
Angular (Deg)	0.50	0.50	0.50	0.33	0.33	0.33	0.33	0.33	0.33	0.33	0.33	0.33
Radial / Parallel (mm/mm)	0.009	0.009	0.009	0.006	0.006	0.006	0.006	0.006	0.006	0.006	0.006	0.006

NOTES :

- * For vertical installation contact RATHI.
- * Non Standard DBSE available on request.
- * Please specify type of hubs (I/I, I/II, II/II, III/III)
- * Weight, M.I. & stiffness are at max. bores with min. DBSE with one I/I hub combination.
- * Available for non-sparking applications on request.
- * M1 is applicable only for hub type II.
- * Dimension specified in () are only for reference.
- * Product complies to API standard.
- * For bore size with square key contact RATHI.
- * Consult RATHI for Max Bore with Square Key.