

**Quality. Safety. Efficiency.**  
Only Quality is economical in the long run



**Römer Fördertechnik**  
Your german component  
manufacturer.

Zellstoffpuffer  
Anschlagpuffer

**Cellular Plastic Buffers**  
**Impact Buffers**



# Impact buffers / Cellular plastic buffers

## Type RFT-ZKSP



RÖMER Fördertechnik GmbH  
Nielandstraße 53 • D-58300 Wetter



RFT-impact buffers made of foamed polyurethane on a MDI-/ polyester-basis are used as buffers and damping elements in general mechanical engineering applications and in the construction of cranes.

The impact buffers are available in different sizes and performances.

Resistant against:

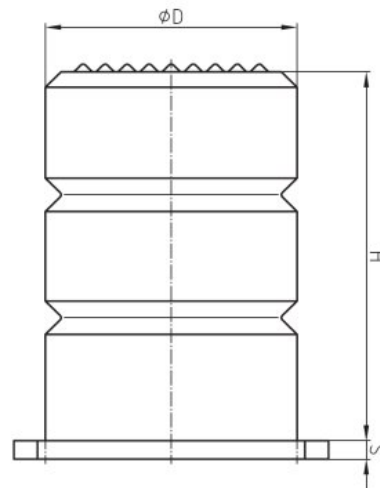
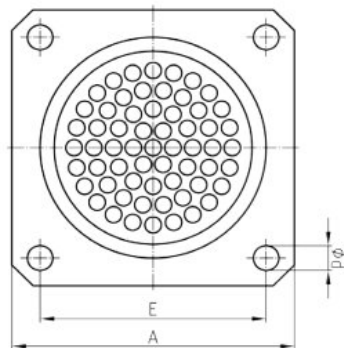
- aliphatic carbohydrates
- Oil and grease compatible
- UV rays
- Ozon
- Aging

Temperature range: from  $-35^{\circ}\text{C}$  up to  $+80^{\circ}\text{C}$

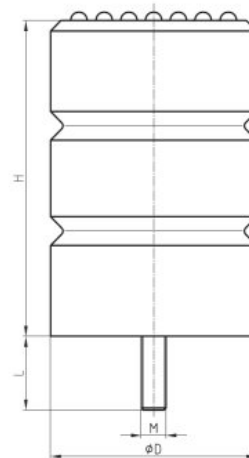
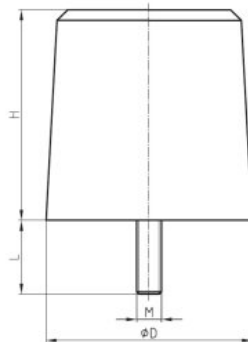
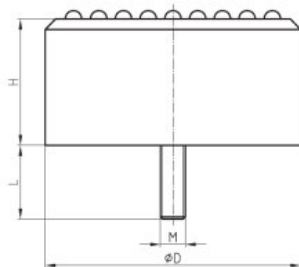
Short time temperature: up to approx.  $100^{\circ}\text{C}$

Mounting version: with base plate (aluminium, plastic, steel)  
with central mounting (bolt or internal thread)

Version mit Grundplatte  
Version with plate



Version mit Zentralbefestigung  
Version with central mounting



# Impact buffers / Cellular plastic buffers

## power data



RÖMER Fördertechnik GmbH  
Nielandstraße 53 • D-58300 Wetter

Buffer No.	Buffer size	Dimensions ø x L mm	Final Force in [kN]					max. compression [mm]
			Energy absorption in [kJ]					
			Operating speed in [m/s]					
static	1 m/s	2 m/s	3 m/s	4 m/s				
0	2	70 x 70	24	26	30	35	38	56
			0,46	0,59	0,67	0,84	1,00	
1	1	80 x 40	31	34	41	47	51	32
			0,37	0,47	0,54	0,67	0,80	
2	2	80 x 80	31	34	41	47	51	64
			0,7	0,89	1,02	1,28	1,52	
3	3	80 x 120	31	34	41	47	51	96
			1,08	1,37	1,57	1,96	2,33	
4	1	100 x 50	50	55	65	75	80	40
			0,69	0,88	1,00	1,25	1,50	
5	2	100 x 100	50	55	65	75	80	80
			1,42	1,81	2,10	2,60	3,10	
6	3	100 x 150	50	55	65	75	80	120
			2,10	2,60	3,00	3,70	4,50	
7	1	125 x 63	65	80	95	110	120	50
			1,33	1,70	2,06	2,42	2,90	
8	2	125 x 125	65	80	95	110	120	100
			2,61	3,33	4,04	4,75	5,70	
9	3	125 x 190	65	80	95	110	120	150
			3,94	5,00	6,00	7,10	8,60	
10	1	160 x 80	123	147	172	186	200	64
			2,30	3,10	3,90	4,90	6,00	
11	2	160 x 160	123	147	172	186	200	128
			4,70	6,10	7,80	9,70	11,40	
12	3	160 x 240	123	147	172	186	200	192
			7,10	9,14	11,80	14,55	18,00	
13	1	200 x 100	190	230	270	300	315	80
			5,50	7,20	8,80	10,40	12,20	
14	2	200 x 200	190	230	270	300	315	160
			10,80	14,20	17,40	20,50	24,00	
15	3	200 x 300	190	230	270	300	315	240
			15,80	20,70	25,30	30,00	35,00	
16	1	250 x 125	275	300	350	400	490	100
			10,54	13,64	16,74	19,84	23,00	
17	2	250 x 250	275	300	350	400	490	200
			21,13	27,35	33,56	39,78	46,00	
18	3	250 x 375	275	300	350	400	490	300
			31,71	41,03	50,36	59,68	69,00	
19	1	315 x 158	650	717	728	750	780	126
			13,30	17,50	22,50	35,00	47,00	
20	2	315 x 315	650	717	728	750	780	252
			26,60	35,28	45,36	70,56	93,00	
21	3	315 x 475	650	717	728	750	780	380
			39,84	54,67	69,58	109,34	140,00	
22	1	400 x 200	1000	1100	1150	1200	1250	160
			31,13	39,50	49,22	72,00	94,00	
23	2	400 x 400	1000	1100	1150	1200	1250	320
			50,00	80,00	90,00	140,00	190,00	
24	3	400 x 600	1000	1100	1150	1200	1250	480
			80,00	120,00	140,00	220,00	282,00	
25	1	500 x 250	1500	1700	1800	1900	1950	200
			50,00	70,00	90,00	140,00	185,00	
26	2	500 x 500	1500	1700	1800	1900	1950	400
			100,00	154,00	179,00	275,00	370,00	
27	3	500 x 750	1500	1700	1800	1900	1950	600
			150,00	225,00	275,00	425,00	555,00	
28	1	600 x 300	2500	2650	2700	2750	2800	240
			87,50	125,00	150,00	250,00	317,00	
29	2	600 x 600	2500	2650	2700	2750	2800	480
			175,00	250,00	300,00	500,00	633,00	
30	3	600 x 900	2500	2650	2700	2750	2800	720
			250,00	400,00	500,00	750,00	950,00	

Römer Fördertechnik GmbH / Nielandstrasse 53  
58300 Wetter / Ruhr / Germany

T +49(0)2335. 8029-0  
F +49(0)2335. 8029-29

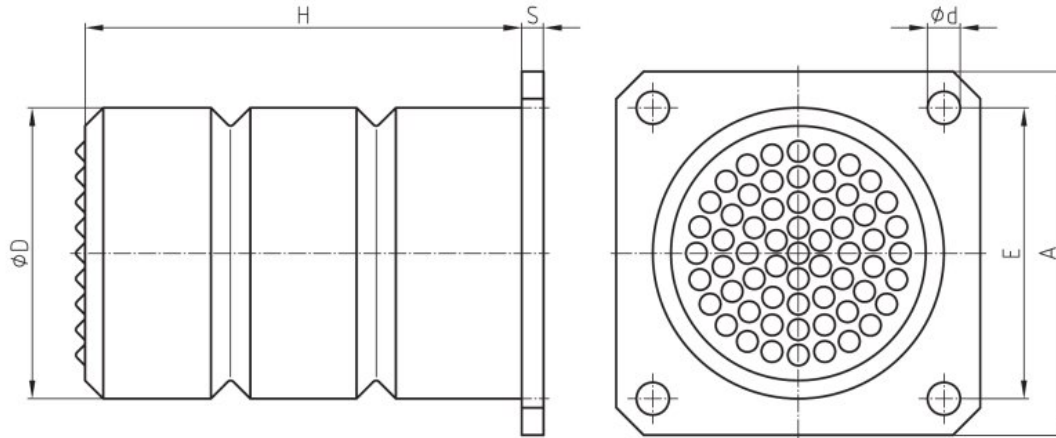
eMail: info@roemer-foerdertechnik.de  
web: www.roemer-foerdertechnik.de

Änderung vorbehalten  
Modifications reserved 150311

# Impact buffers / Cellular plastic buffers with aluminium plate



RÖMER Fördertechnik GmbH  
Nielandstraße 53 • D-58300 Wetter



## Version with aluminium-plate

Buffer No.	Buffer size	Product-No.	Dimensions (mm)						Weight (kg)
			Buffer diameter (D)	Buffer height (H)	Thickness (s)	Outer-dimension (A)	Hole separation (E)	Hole diameter (d)	
1	1	202 801 045	80	40	10	110	80	13,8	0,4
2	2	202 802 045	80	80	10	110	80	13,8	0,5
3	3	202 803 045	80	120	10	110	80	13,8	0,6
4	1	202 101 045	100	50	10	125	100	14	0,6
5	2	202 102 045	100	100	10	125	100	14	0,8
6	3	202 103 045	100	150	10	125	100	14	1
7	1	202 121 045	125	63	12	160	125	18	1,2
8	2	202 122 045	125	125	12	160	125	18	1,5
9	3	202 123 045	125	190	12	160	125	18	2
10	1	202 161 045	160	80	12	200	160	18	1,6
11	2	202 162 045	160	160	12	200	160	18	2,8
12	3	202 163 045	160	240	12	200	160	18	3,7
13	1	202 201 045	200	100	14	250	200	22	3,6
14	2	202 202 045	200	200	14	250	200	22	5,5
15	3	202 203 045	200	300	14	250	200	22	7,2

Römer Fördertechnik GmbH / Nielandstrasse 53  
58300 Wetter / Ruhr / Germany

T +49(0)2335. 8029-0  
F +49(0)2335. 8029-29

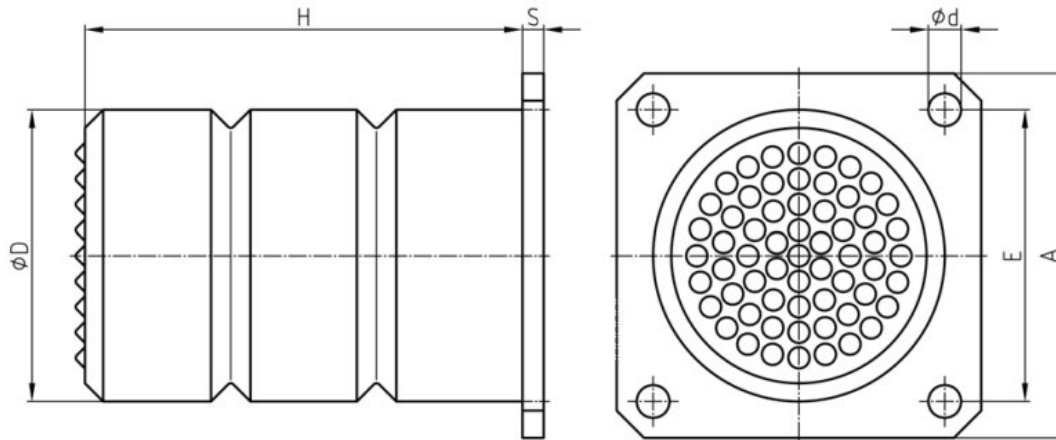
eMail: [info@roemer-foerdertechnik.de](mailto:info@roemer-foerdertechnik.de)  
web: [www.roemer-foerdertechnik.de](http://www.roemer-foerdertechnik.de)

Änderung vorbehalten  
Modifications reserved 150311

# Impact buffers / Cellular plastic buffers with plastic plate



RÖMER Fördertechnik GmbH  
Nielandstraße 53 • D-58300 Wetter



## Version with plastic-plate

Buffer No.	Buffer size	Product-No.	Dimensions (mm)						Weight (kg)
			Buffer diameter (D)	Buffer height (H)	Thickness (s)	Outer-dimension (A)	Hole separation (E)	Hole diameter (d)	
1	1	255 801 045	80	40	10	110	80	14	0,2
2	2	255 802 045	80	80	10	110	80	14	0,3
3	3	255 803 045	80	120	10	110	80	14	0,4
4	1	255 101 045	100	50	10	125	100	14	0,3
5	2	255 102 045	100	100	10	125	100	14	0,5
6	3	255 103 045	100	150	10	125	100	14	0,7
7	1	255 121 045	125	63	12	160	125	18	0,6
8	2	255 122 045	125	125	12	160	125	18	1
9	3	255 123 045	125	190	12	160	125	18	1,4
10	1	255 161 045	160	80	12	200	160	18	1,1
11	2	255 162 045	160	160	12	200	160	18	2
12	3	255 163 045	160	240	12	200	160	18	2,8
13	1	255 201 045	200	100	14	250	200	22	2,15
14	2	255 202 045	200	200	14	250	200	22	3,8
15	3	255 203 045	200	300	14	250	200	22	5,5

Römer Fördertechnik GmbH / Nielandstrasse 53  
58300 Wetter / Ruhr / Germany

T +49(0)2335. 8029-0  
F +49(0)2335. 8029-29

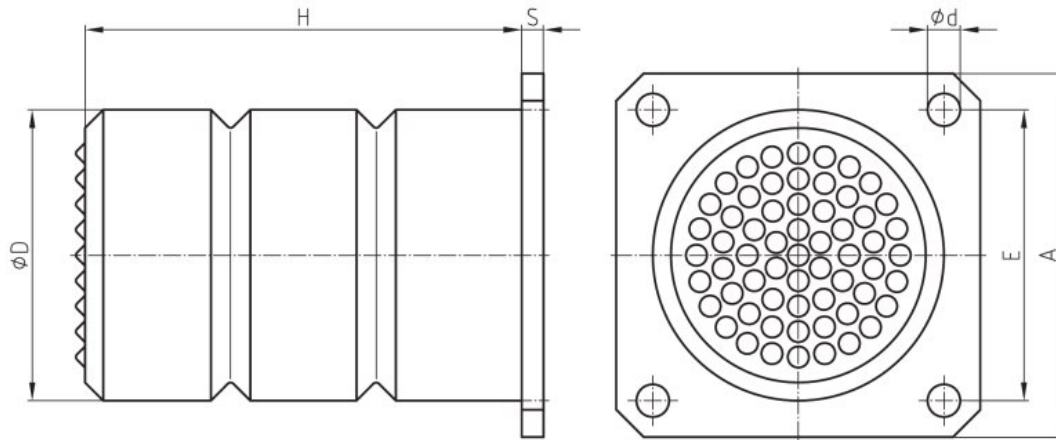
eMail: [info@roemer-foerdertechnik.de](mailto:info@roemer-foerdertechnik.de)  
web: [www.roemer-foerdertechnik.de](http://www.roemer-foerdertechnik.de)

Änderung vorbehalten  
Modifications reserved 150311

# Impact buffers / Cellular plastic buffers with steel plate



RÖMER Fördertechnik GmbH  
Nielandstraße 53 • D-58300 Wetter



## Version with steel-plate

Buffer No.	Buffer size	Product-No.	Dimensions (mm)						Weight (kg)
			Buffer diameter (D)	Buffer height (H)	Thickness (s)	Outer-dimension (A)	Hole separation (E)	Hole diameter (d)	
16	1	202 251 045	250	125	15	315	250	22	14,2
17	2	202 252 045	250	250	15	315	250	22	17,8
18	3	202 253 045	250	375	15	315	250	22	20,6
19	1	202 311 045	315	158	15	400	315	22	22
20	2	202 312 045	315	315	15	400	315	22	29
21	3	202 313 045	315	475	15	400	315	22	36
22	1	202 401 045	400	200	20	500	400	26	47
23	2	202 402 045	400	400	20	500	400	26	59
24	3	202 403 045	400	600	20	500	400	26	71
25	1	202 501 045	500	250	20	630	500	26	83
26	2	202 502 045	500	500	20	630	500	26	105
27	3	202 503 045	500	750	20	630	500	26	129
28	1	202 601 045	600	300	20	730	600	26	116
29	2	202 602 045	600	600	20	730	600	26	167
30	3	202 603 045	600	900	20	730	600	26	198

Römer Fördertechnik GmbH / Nielandstrasse 53  
58300 Wetter / Ruhr / Germany

T +49(0)2335. 8029-0  
F +49(0)2335. 8029-29

eMail: [info@roemer-foerdertechnik.de](mailto:info@roemer-foerdertechnik.de)  
web: [www.roemer-foerdertechnik.de](http://www.roemer-foerdertechnik.de)

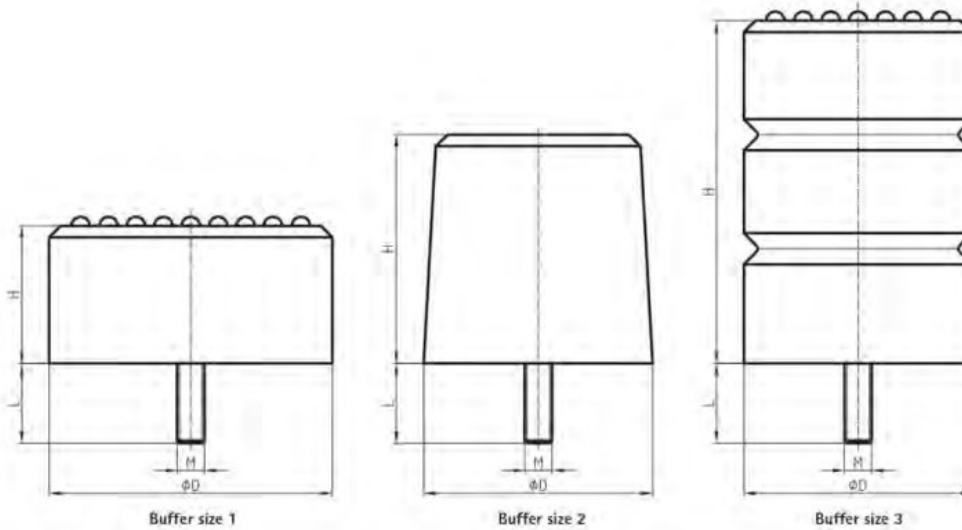
Änderung vorbehalten  
Modifications reserved 150311

# Impact buffers / Cellular plastic buffers

with central mounting (bolt or internal thread)



RÖMER Fördertechnik GmbH  
Nielandstraße 53 • D-58300 Wetter



## Version with central mounting bolt or internal thread

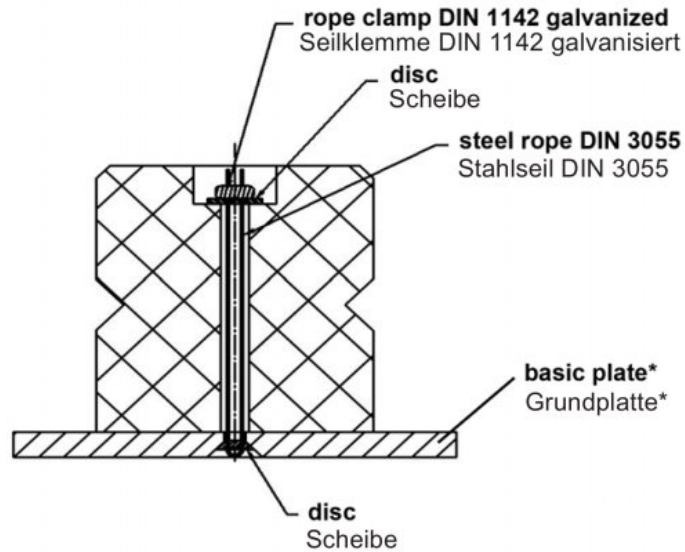
Buffer No.	Buffer size	Dimensions (mm)		Buffer central mounting bolt			Buffer internal thread		Weight (kg)
		Buffer diameter (D)	Buffer height (H)	Product-No.	Thread (M)	Length (L)	Product-No.	Thread (M)	
0	2	70	70	233 701 045	M 12	35	235 701 045	M 12	0,25
1	1	80	40	233 801 045	M 12	35	235 801 045	M 12	0,21
2	2	80	80	233 802 045	M 12	35	235 802 045	M 12	0,31
3	3	80	120	233 803 045	M 12	35	235 803 045	M 12	0,42
4	1	100	50	233 101 045	M 12	35	235 101 045	M 12	0,31
5	2	100	100	233 102 045	M 12	35	235 102 045	M 12	0,52
6	3	100	150	233 103 045	M 12	35	235 103 045	M 12	0,73
7	1	125	63	233 121 045	M 12	35	235 121 045	M 12	0,51
8	2	125	125	233 122 045	M 12	35	235 122 045	M 12	0,92
9	3	125	190	233 123 045	M 12	35	235 123 045	M 12	1,32
10	1	160	80	233 161 045	M 12	35	235 161 045	M 12	0,95
11	2	160	160	233 162 045	M 12	35	235 162 045	M 12	1,80
12	3	160	240	233 163 045	M 12	35	235 163 045	M 12	2,66
13	1	200	100	233 201 045	M 12	35	235 201 045	M 12	1,76
14	2	200	200	233 202 045	M 12	35	235 202 045	M 12	3,43
15	3	200	300	233 203 045	M 12	35	235 203 045	M 12	5,10
16	1	250	125	233 251 045	M 24	80	235 251 045	M 24	5,40
17	2	250	250	233 252 045	M 24	80	235 252 045	M 24	8,50
18	3	250	375	233 253 045	M 24	80	235 253 045	M 24	11,50
19	1	315	158	233 311 045	M 24	80	235 311 045	M 24	8,50
20	2	315	315	233 312 045	M 24	80	235 312 045	M 24	14,65
21	3	315	475	233 313 045	M 24	80	235 313 045	M 24	20,80
22	1	400	200	233 401 045	M 30	80	235 401 045	M 30	16,50
23	2	400	400	233 402 045	M 30	80	235 402 045	M 30	29,10
24	3	400	600	233 403 045	M 30	80	235 403 045	M 30	41,60

# Anschlagpuffer / Zellstoffpuffer

## Rope protection / Seilsicherung



RÖMER Fördertechnik GmbH  
Nielandstraße 53 • D-58300 Wetter



Puffergröße	Artikelnummer	Puffer- Ø x Pufferhöhe
buffer-size*	Item no.	buffer- Ø x buffer- height
11	202162145	160 x 160
12	202163145	160 x 240
14	202202145	200 x 200
15	202203445	200 x 300
17	202252945	250 x 250
18	202253545	250 x 375
20	255312145	315 x 315
21	202313445	315 x 475
23	202402245	400 x 400
24	202403945	400 x 600
26	202502245	500 x 500
27	202503245	500 x 750
29	202602345	600 x 600
30	202603245	600 x 900

Buffer size 11 - 15 with aluminium base plate / Puffergröße 11 - 15 mit Aluminiumgrundplatte  
Buffer size 17 - 30 with steel base plate / Puffergröße 17 - 30 mit Stahlgrundplatte



# Impact buffers / Cellular plastic buffers

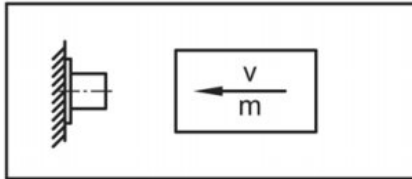
## calculation example



RÖMER Fördertechnik GmbH  
Nielandstraße 53 • D-58300 Wetter



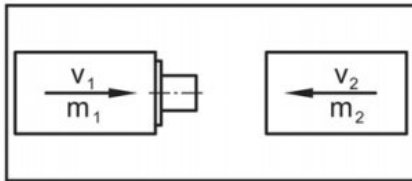
### Mass against stop



$$W = 1/2 m v^2$$

The calculation method is on the next page.

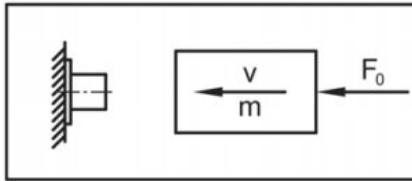
### Mass against mass



$$W = \frac{m_1 m_2 (v_1 + v_2)^2}{2 (m_1 + m_2)}$$

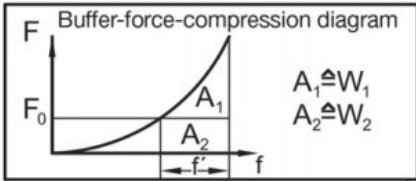
$m_1 = m_2$  und  $v_1 = v_2$   
 $W = m v^2$

### Mass with drive against stop

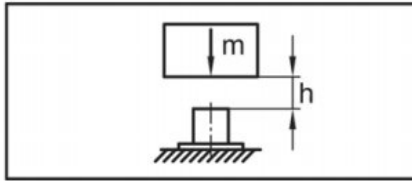


$$W = 1/2 m v^2$$

$$W_2 = F_0 f'$$



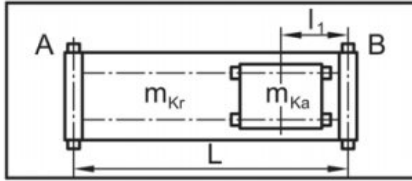
### Mass in free fall



$$W = m g h$$

This formula is **not** applicable to lifts

### Crane-buffer-calculation



$$W_B = 1/2 m_B v^2$$

$$m_B = \frac{m_{Kr}}{2} + \frac{m_{Ka} (L - l_1)}{L}$$

- pendular movement of the load is not required
- rotation energy from motor drive is required
- reduced speed in accordance with DIN 15018
- $v = 100\%$  of nominal speed for cars
- $v = 85\%$  of nominal speed for cranes
- $v = 70\%$  of nominal speed for cranes with breaking devices

### Formula of calculating the deceleration

$$a_{\text{mitt}} = \frac{v^2}{2f} \quad a_{\text{max}} = \frac{F}{m}$$

$a_{\text{mitt}}$	- average deceleration	$m/s^2$	$h$	- length of drop	$m$	$m_B$	- mass at rail B	$kg$
$a_{\text{max}}$	- maximum deceleration	$m/s^2$	$L$	- distance between rails	$m$	$v$	- operating speed	$m/s$
$F_0$	- drive force	$kN$	$l$	- distance $m_{Ka}$ to B	$m$	$v/2$	- speed of body 1 or 2	$m/s$
$F$	- final force	$kN$	$m$	- mass	$kg$	$w$	- kinetic energy	$J$
$f$	- compression of the buffer	$m$	$m_{Kr}$	- mass of crane without car	$kg$	$w_1$	- kinetic energy	$J$
$f'$	- operating compression	$m$	$m_{Ka}$	- mass of car	$kg$	$w_2$	- energy of $F_0$	$J$
$g$	- gravity	$9,81m/s^2$	$m_1/m_2$	- mass of body 1 or 2	$kg$	$w_{zul}$	- permitted energy input	$J$

# Impact buffers / Cellular plastic buffers

## calculation example



RÖMER Fördertechnik GmbH  
Nielandstraße 53 • D-58300 Wetter



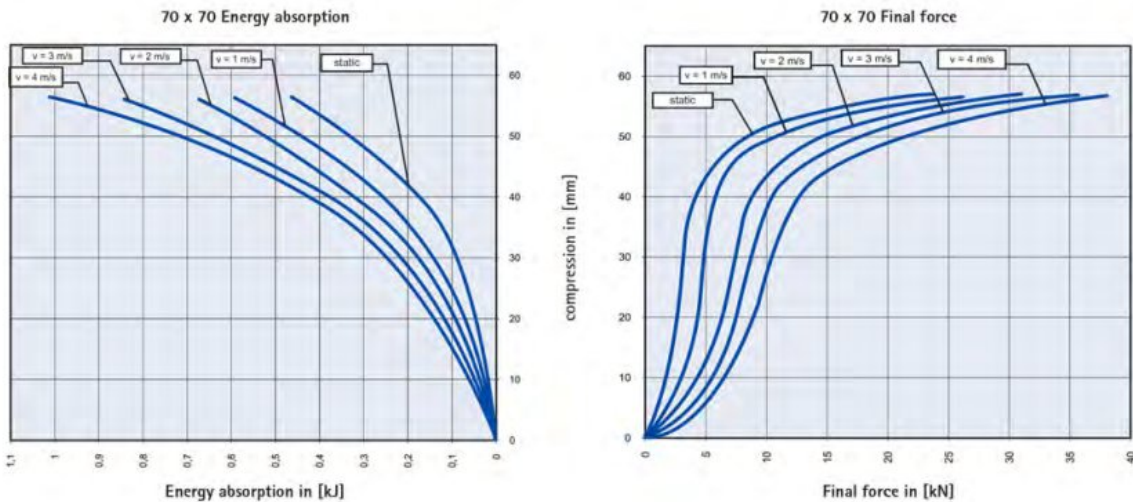
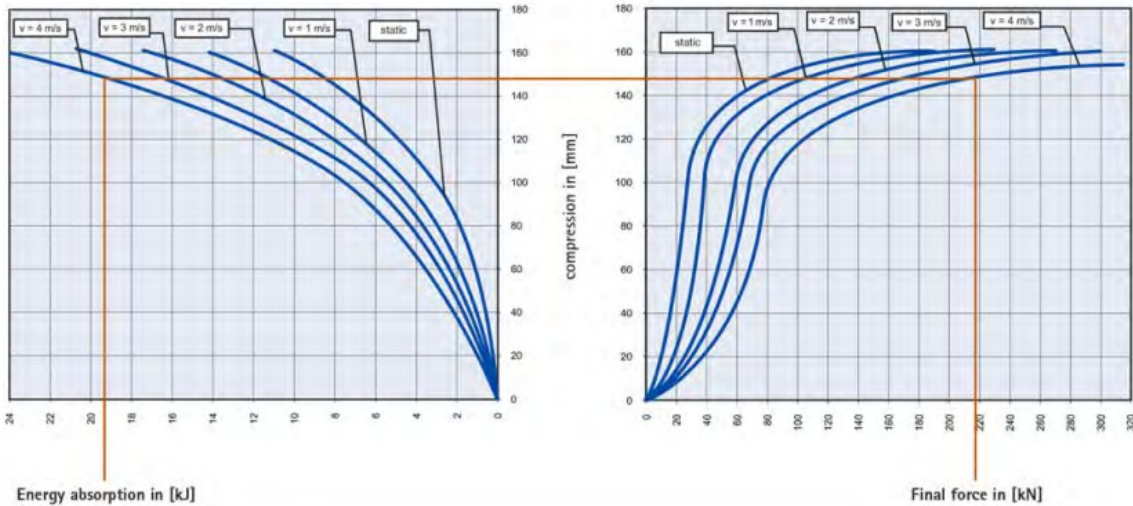
### Example of calculation

**Application:** Mass against a stop

**Formula:**  $W = 1/2 \times m \times v^2$

**Performance Criteria:** Mass  $m = 2490 \text{ kg}$   
operating speed  $v = 4 \text{ m/s}$

**Calculation:**  $W = 1/2 \times 2490 \text{ kg} \times (4,0 \text{ m/s})^2$   
 $= 19920 \text{ Nm [J]}$   
 $= 19,92 \text{ kNm [kJ]}$



Römer Fördertechnik GmbH / Nielandstrasse 53  
58300 Wetter / Ruhr / Germany

T +49 (0)2335. 8029-0  
F +49 (0)2335. 8029-29

eMail: [info@roemer-foerdertechnik.de](mailto:info@roemer-foerdertechnik.de)  
web: [www.roemer-foerdertechnik.de](http://www.roemer-foerdertechnik.de)

Änderung vorbehalten  
Modifications reserved 150311

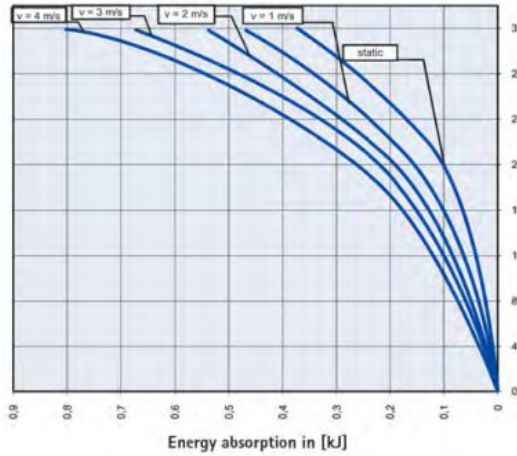
# Impact buffers / Cellular plastic buffers

Ø 80

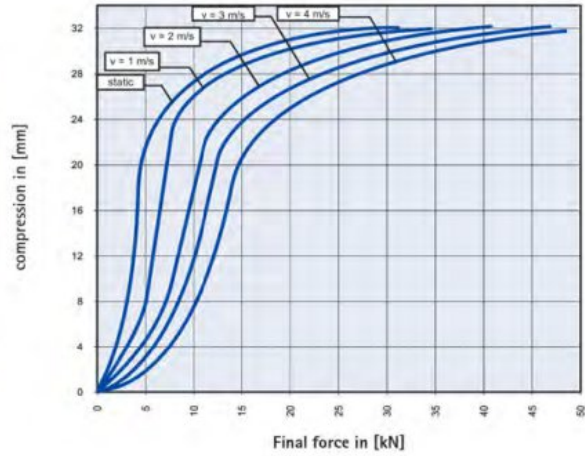


RÖMER Fördertechnik GmbH  
Nielandstraße 53 • D-58300 Wetter

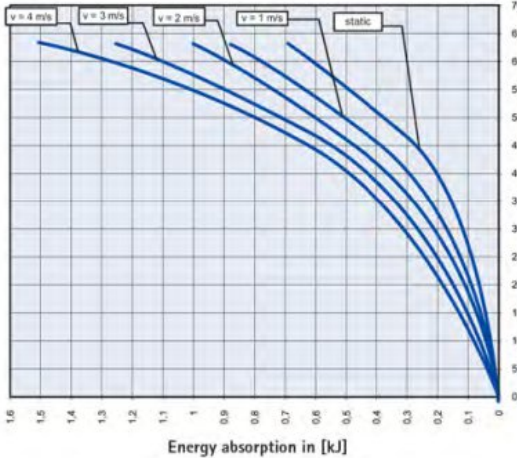
80 x 40 Energy absorption



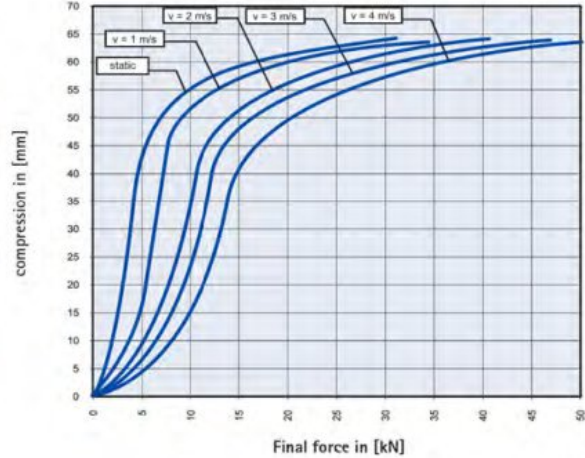
80 x 40 Final force



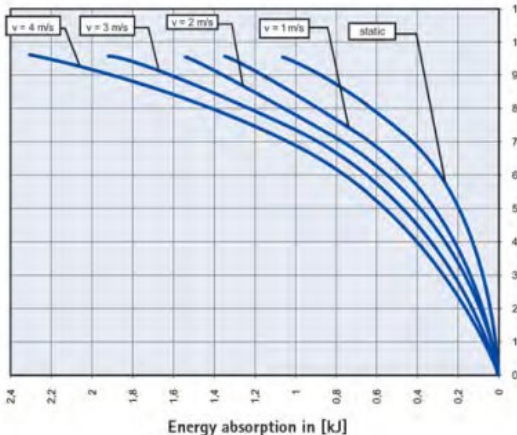
80 x 80 Energy absorption



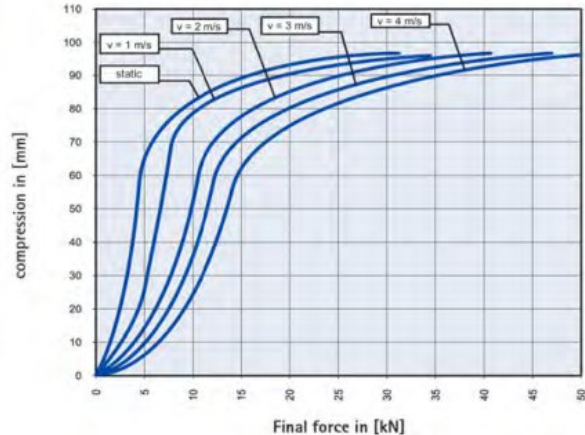
80 x 80 Final force



80 x 120 Energy absorption



80 x 120 Final force



Römer Fördertechnik GmbH / Nielandstrasse 53  
58300 Wetter / Ruhr / Germany

T +49 (0)2335. 8029-0  
F +49 (0)2335. 8029-29

eMail: info@roemer-foerdertechnik.de  
web: www.roemer-foerdertechnik.de

Änderung vorbehalten  
Modifications reserved 150311

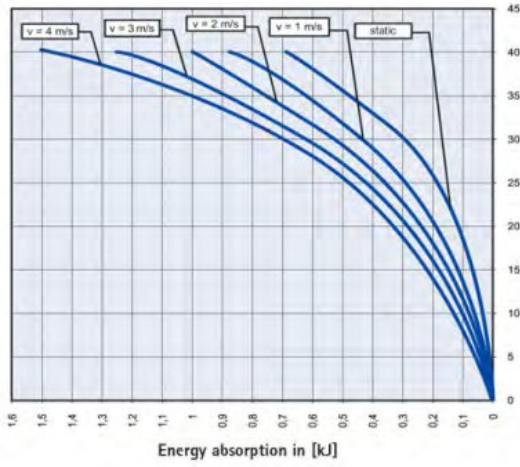
# Impact buffers / Cellular plastic buffers

Ø 100

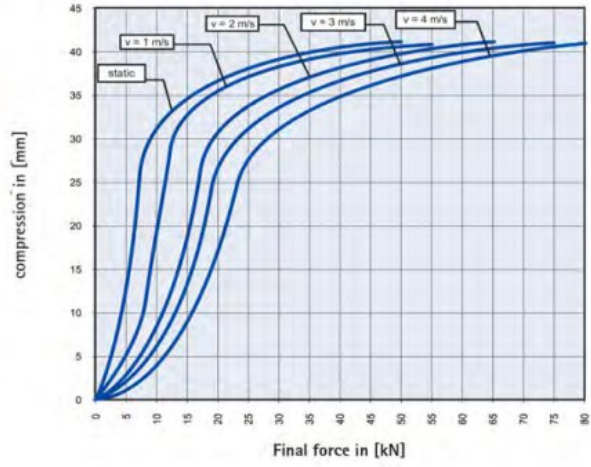


RÖMER Fördertechnik GmbH  
Nielandstraße 53 • D-58300 Wetter

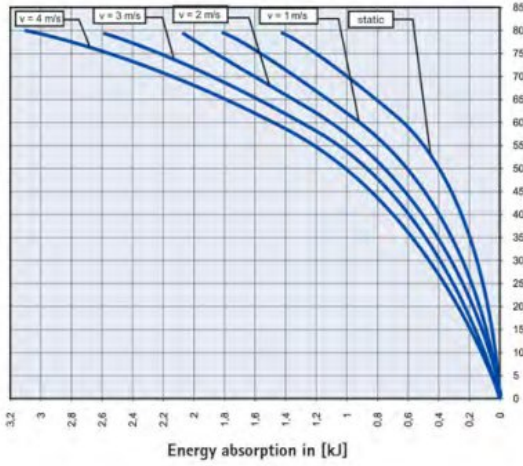
100 x 50 Energy absorption



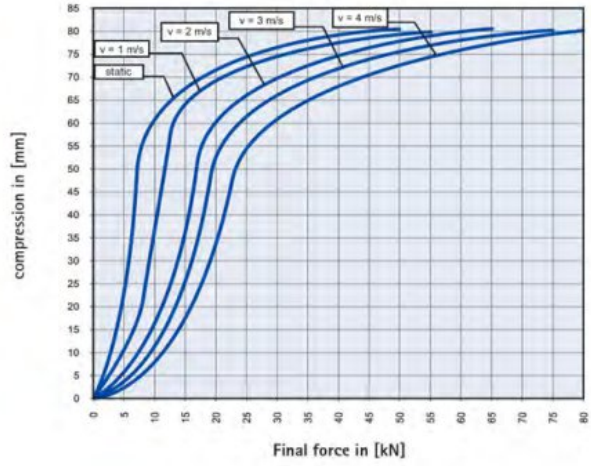
100 x 50 Final force



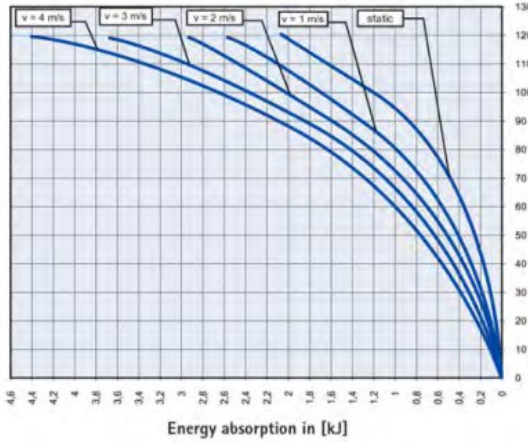
100 x 100 Energy absorption



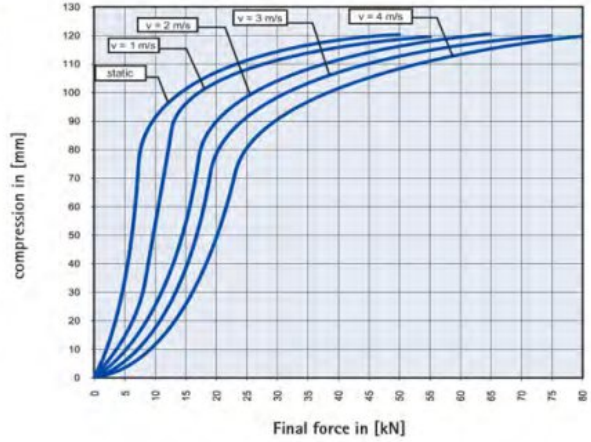
100 x 100 Final force



100 x 150 Energy absorption



100 x 150 Final force



Römer Fördertechnik GmbH / Nielandstrasse 53  
58300 Wetter / Ruhr / Germany

T +49(0)2335. 8029-0  
F +49(0)2335. 8029-29

eMail: info@roemer-foerdertechnik.de  
web: www.roemer-foerdertechnik.de

Änderung vorbehalten  
Modifications reserved 150311

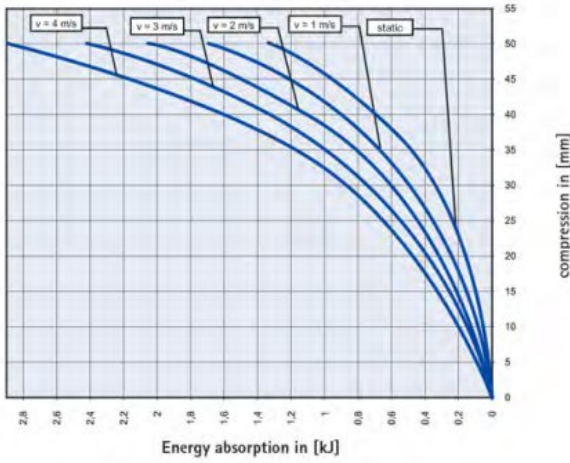
# Impact buffers / Cellular plastic buffers

Ø 125

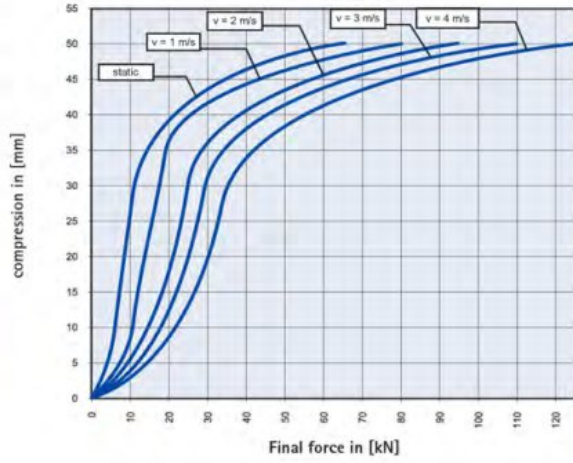


RÖMER Fördertechnik GmbH  
Nielandstraße 53 • D-58300 Wetter

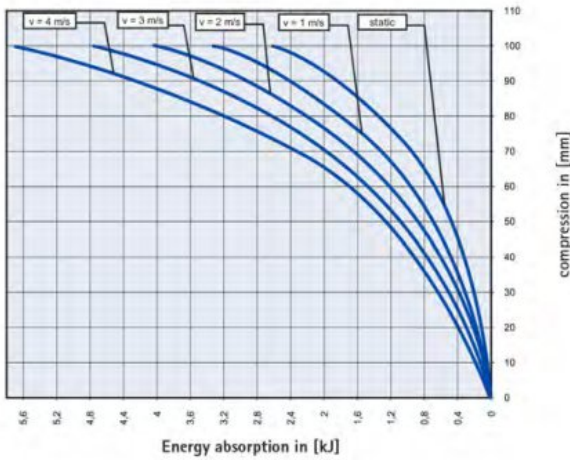
125 x 63 Energy absorption



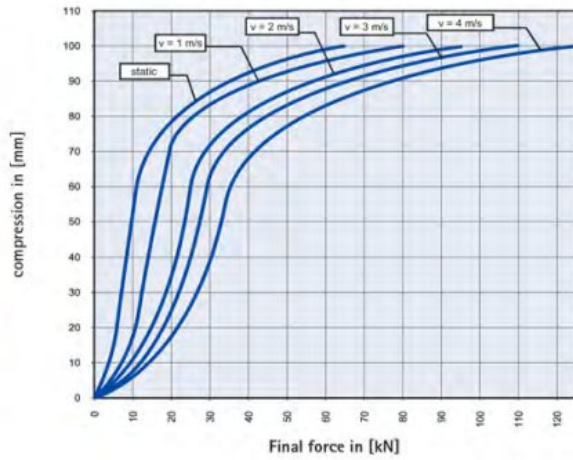
125 x 63 Final force



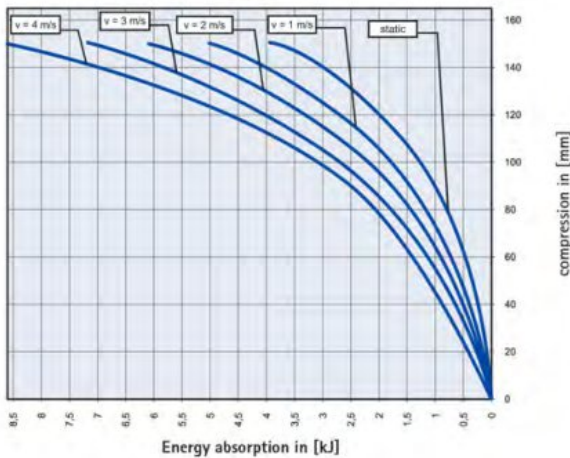
125 x 125 Energy absorption



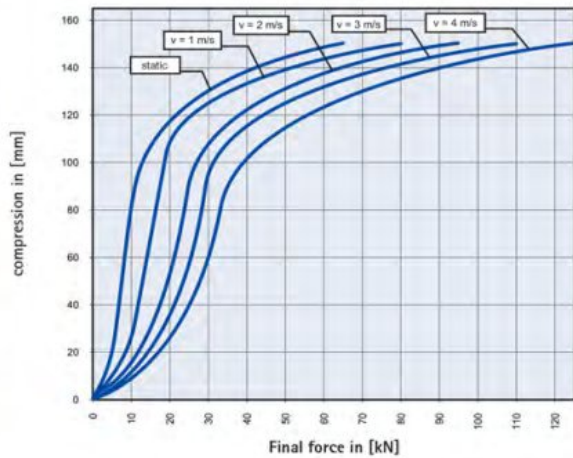
125 x 125 Final force



125 x 190 Energy absorption



125 x 190 Final force



Römer Fördertechnik GmbH / Nielandstrasse 53  
58300 Wetter / Ruhr / Germany

T +49 (0) 2335. 8029-0  
F +49 (0) 2335. 8029-29

eMail: [info@roemer-foerdertechnik.de](mailto:info@roemer-foerdertechnik.de)  
web: [www.roemer-foerdertechnik.de](http://www.roemer-foerdertechnik.de)

Änderung vorbehalten  
Modifications reserved 150311

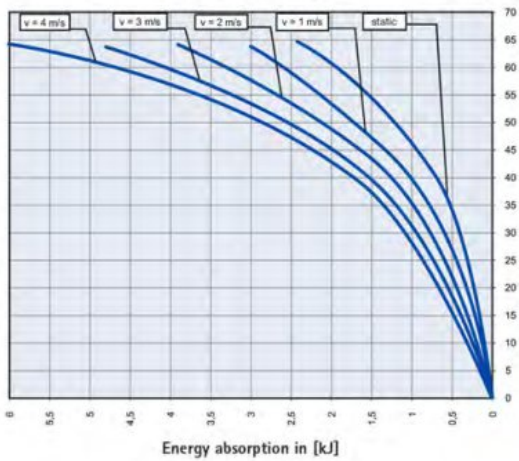
# Impact buffers / Cellular plastic buffers

Ø 160

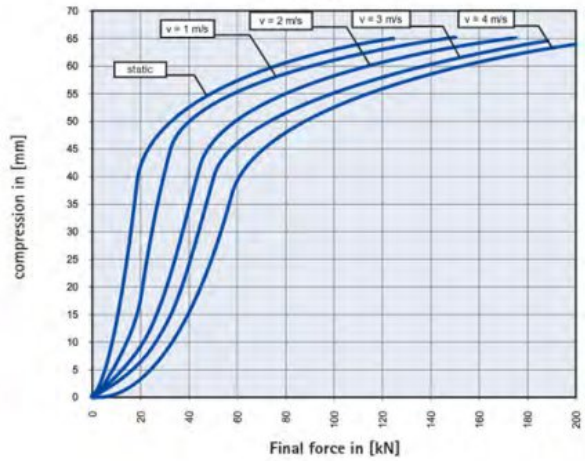


RÖMER Fördertechnik GmbH  
Nielandstraße 53 • D-58300 Wetter

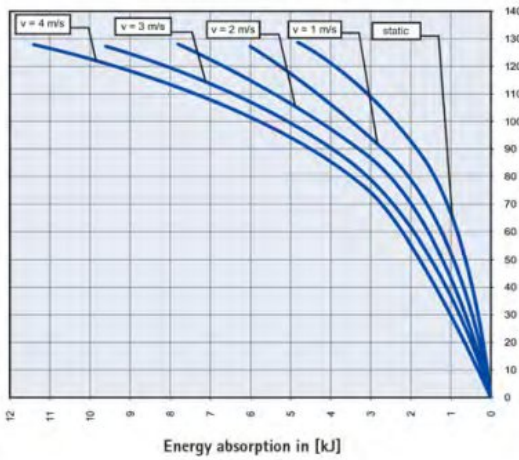
160 x 80 Energy absorption



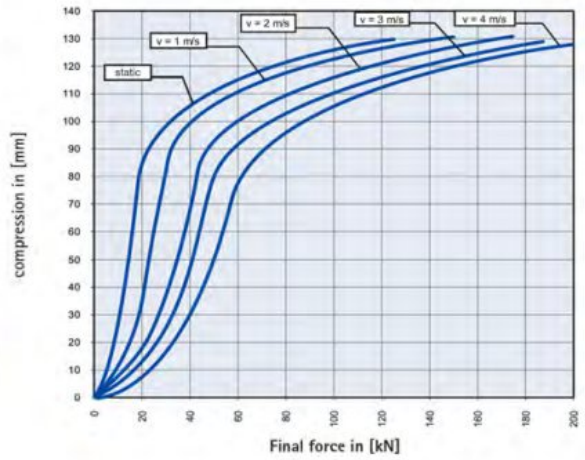
160 x 80 Final force



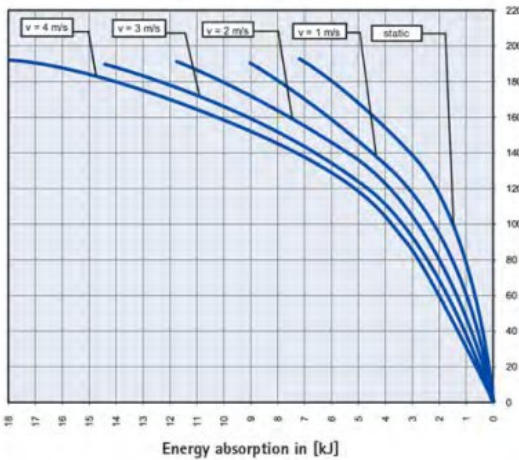
160 x 160 Energy absorption



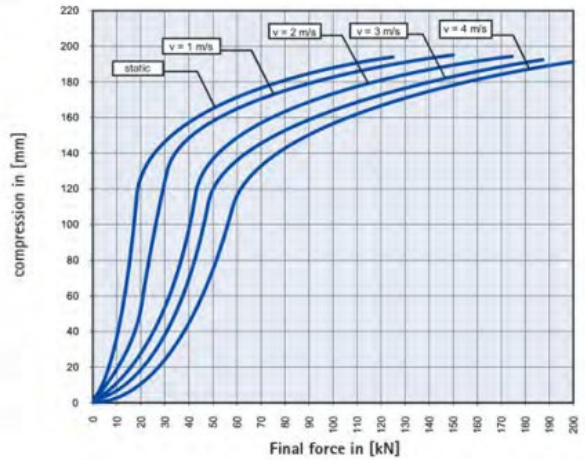
160 x 160 Final force



160 x 240 Energy absorption



160 x 240 Final force



Römer Fördertechnik GmbH / Nielandstrasse 53  
58300 Wetter / Ruhr / Germany

T +49(0)2335. 8029-0  
F +49(0)2335. 8029-29

eMail: info@roemer-foerdertechnik.de  
web: www.roemer-foerdertechnik.de

Änderung vorbehalten  
Modifications reserved 150311

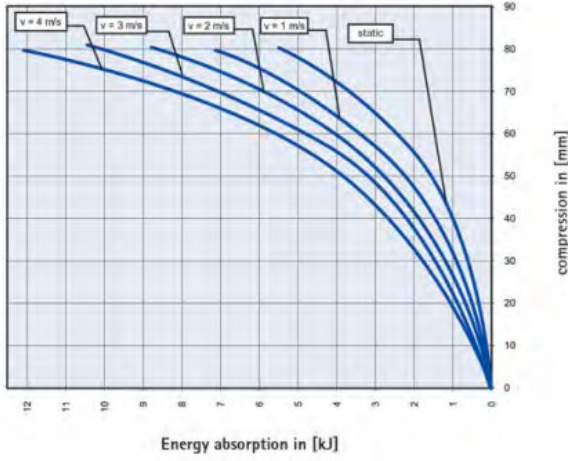
# Impact buffers / Cellular plastic buffers

Ø 200

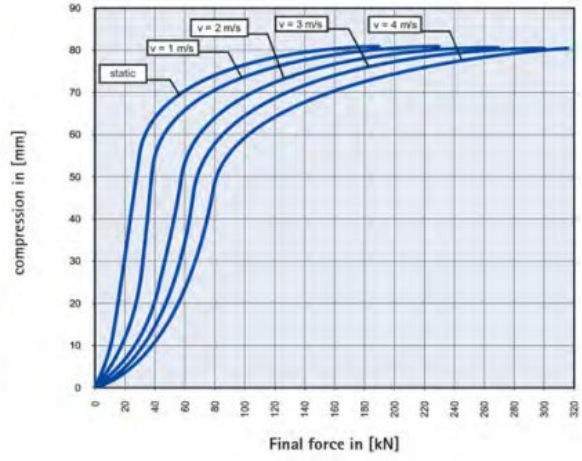


RÖMER Fördertechnik GmbH  
Nielandstraße 53 • D-58300 Wetter

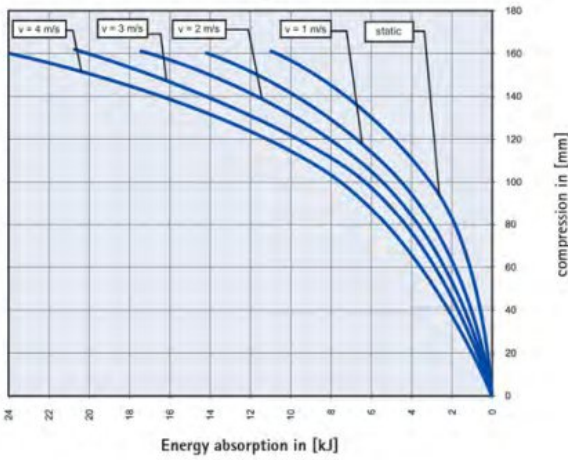
200 x 100 Energy absorption



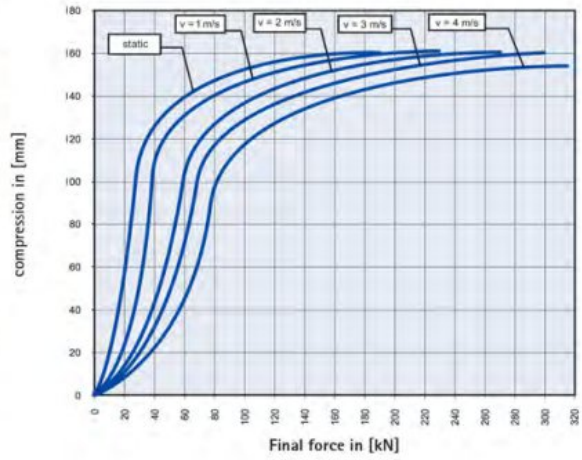
200 x 100 Final force



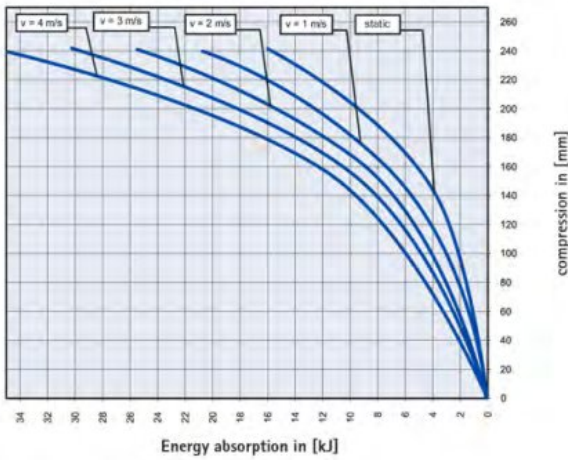
200 x 200 Energy absorption



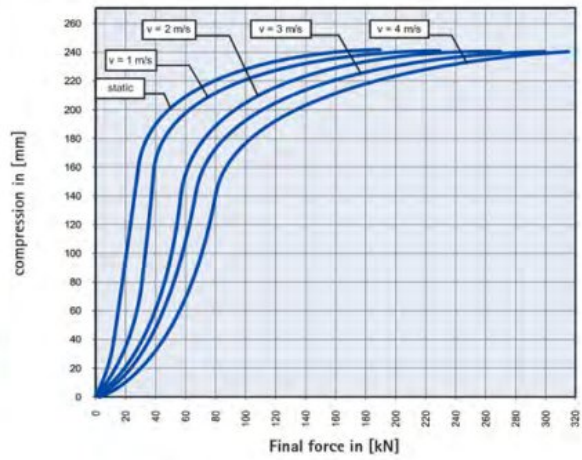
200 x 200 Final force



200 x 300 Energy absorption



200 x 300 Final force



Römer Fördertechnik GmbH / Nielandstrasse 53  
58300 Wetter / Ruhr / Germany

T +49(0)2335. 8029-0  
F +49(0)2335. 8029-29

eMail: info@roemer-foerdertechnik.de  
web: www.roemer-foerdertechnik.de

Änderung vorbehalten  
Modifications reserved 150311

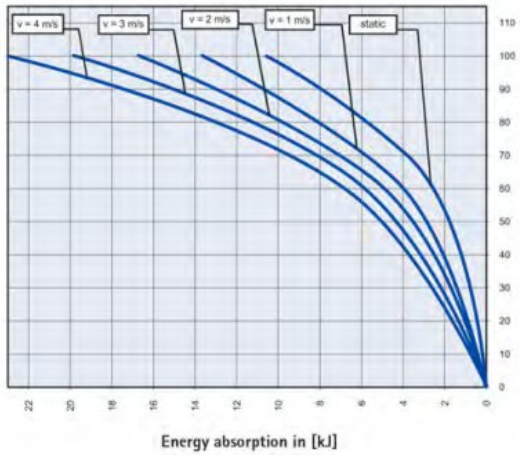
# Impact buffers / Cellular plastic buffers

Ø 250

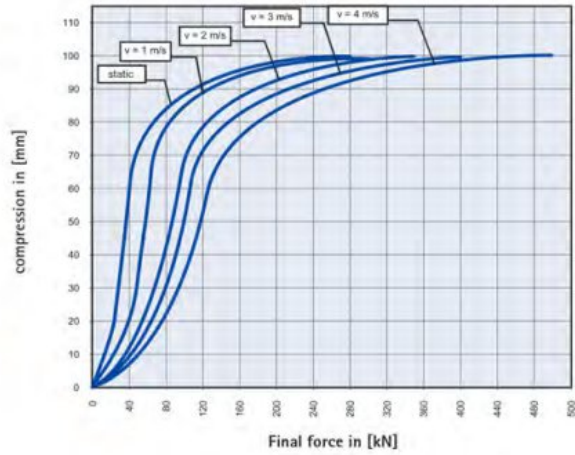


RÖMER Fördertechnik GmbH  
Nielandstraße 53 • D-58300 Wetter

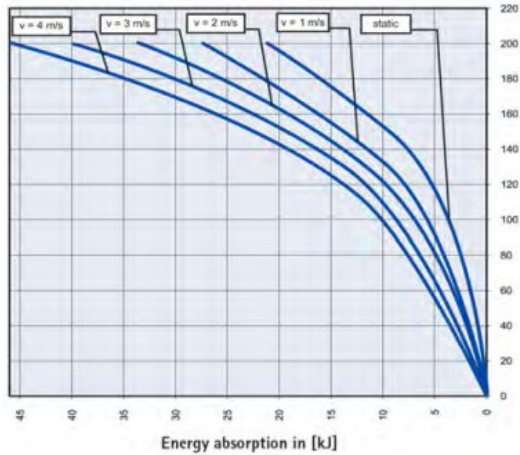
250 x 125 Energy absorption



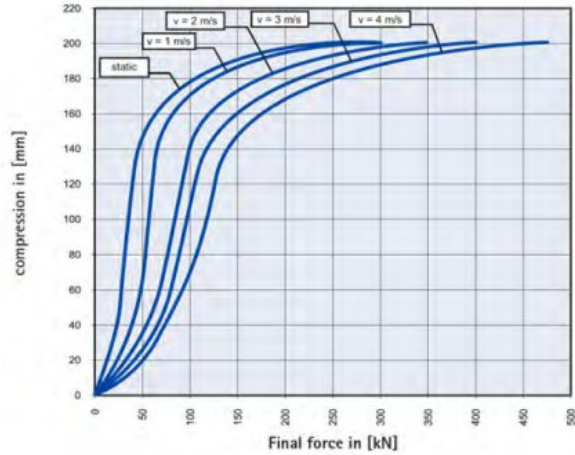
250 x 125 Final force



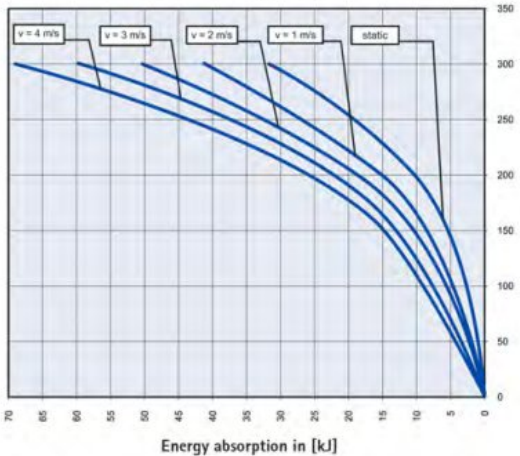
250 x 250 Energy absorption



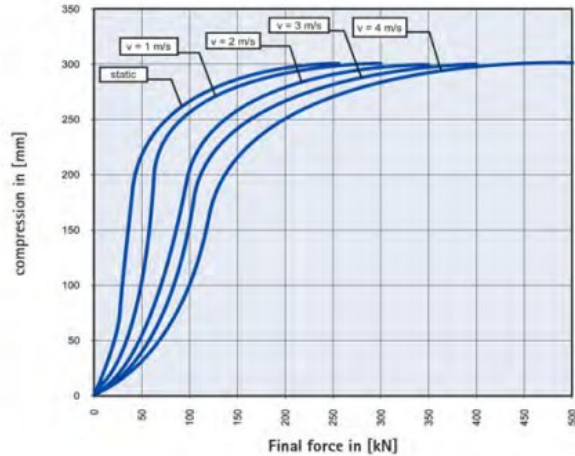
250 x 250 Final force



250 x 375 Energy absorption



250 x 375 Final force



Römer Fördertechnik GmbH / Nielandstrasse 53  
58300 Wetter / Ruhr / Germany

T +49 (0)2335. 8029-0  
F +49 (0)2335. 8029-29

eMail: info@roemer-foerdertechnik.de  
web: www.roemer-foerdertechnik.de

Änderung vorbehalten  
Modifications reserved 150311



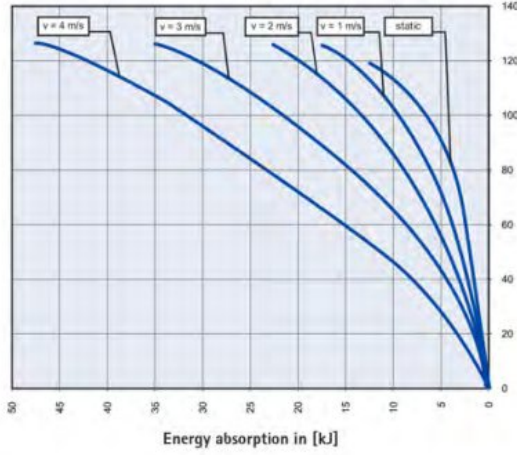
# Impact buffers / Cellular plastic buffers

Ø 315

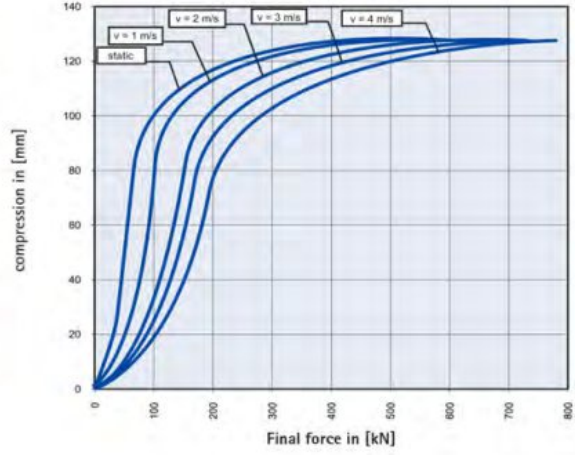


RÖMER Fördertechnik GmbH  
Nielandstraße 53 • D-58300 Wetter

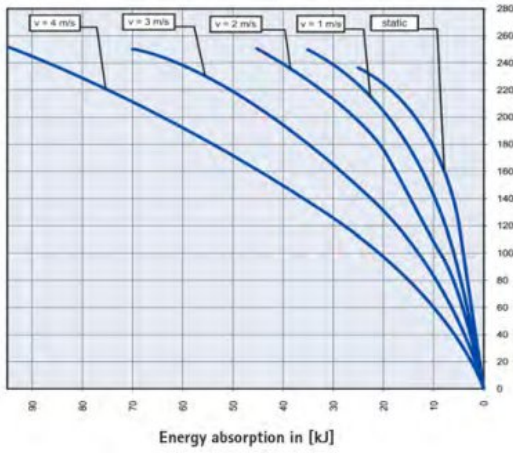
315 x 158 Energy absorption



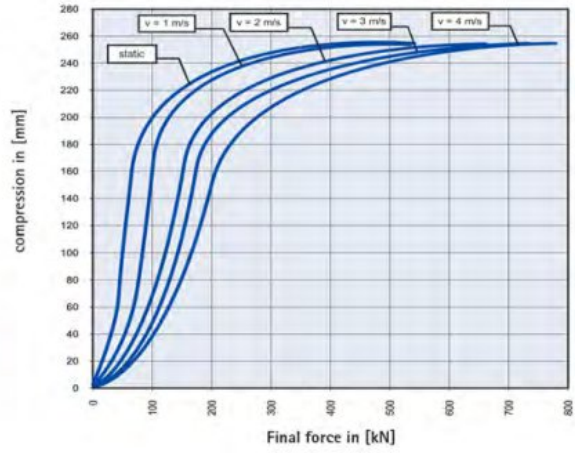
315 x 158 Final force



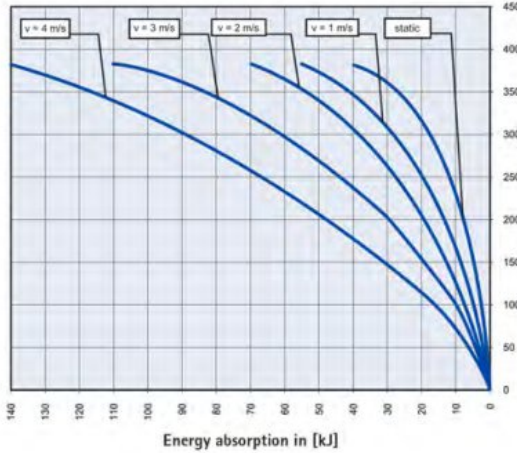
315 x 315 Energy absorption



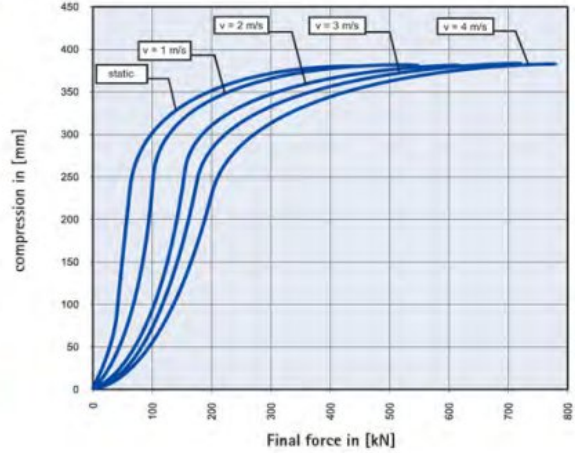
315 x 315 Final force



315 x 475 Energy absorption



315 x 475 Final force



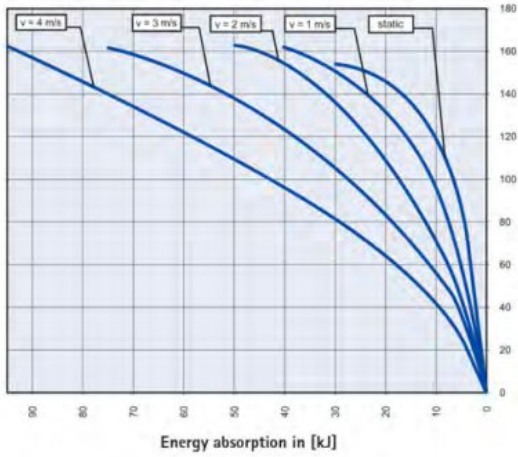
# Impact buffers / Cellular plastic buffers

Ø 400

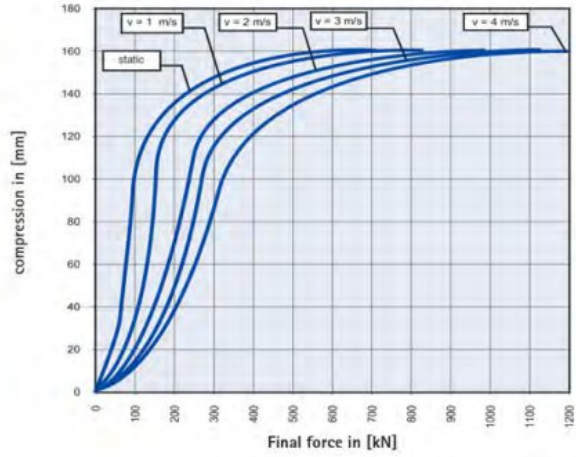


RÖMER Fördertechnik GmbH  
Nielandstraße 53 • D-58300 Wetter

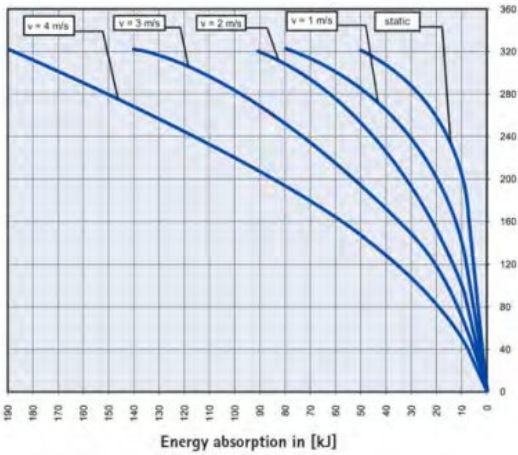
400 x 200 Energy absorption



400 x 200 Final force



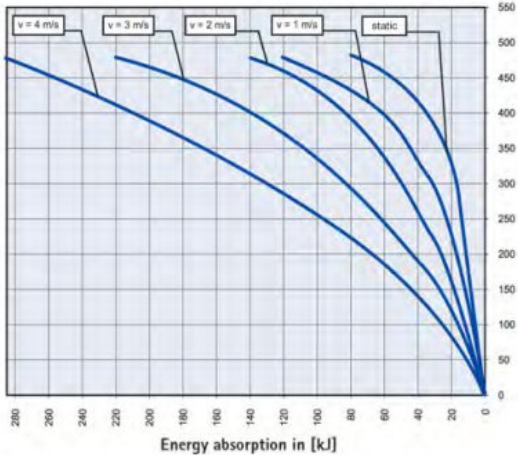
400 x 400 Energy absorption



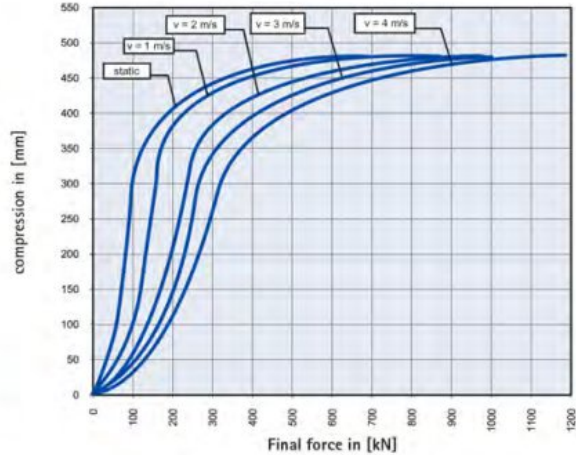
400 x 400 Final force



400 x 600 Energy absorption



400 x 600 Final force



Römer Fördertechnik GmbH / Nielandstrasse 53  
58300 Wetter / Ruhr / Germany

T +49(0)2335. 8029-0  
F +49(0)2335. 8029-29

eMail: [info@roemer-foerdertechnik.de](mailto:info@roemer-foerdertechnik.de)  
web: [www.roemer-foerdertechnik.de](http://www.roemer-foerdertechnik.de)

Änderung vorbehalten  
Modifications reserved 150311

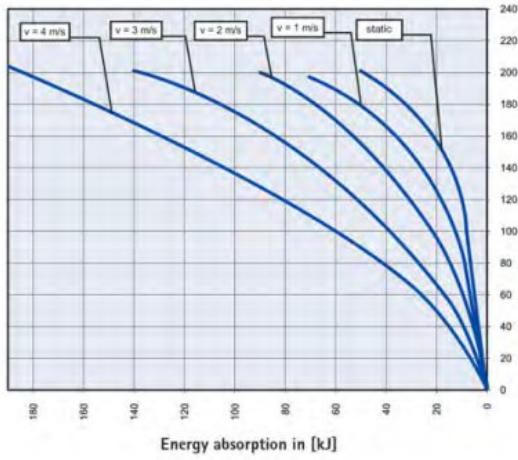
# Impact buffers / Cellular plastic buffers

Ø 500

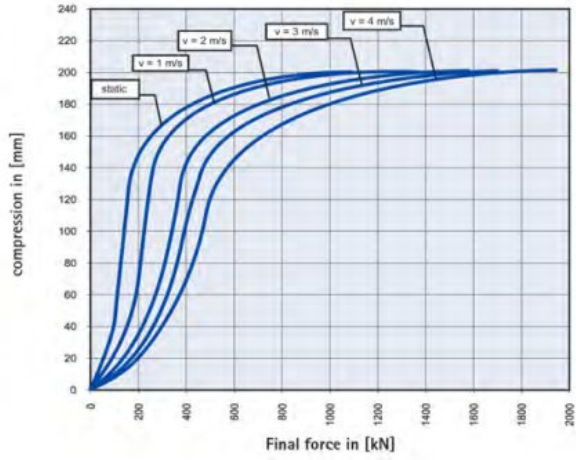


RÖMER Fördertechnik GmbH  
Nielandstraße 53 • D-58300 Wetter

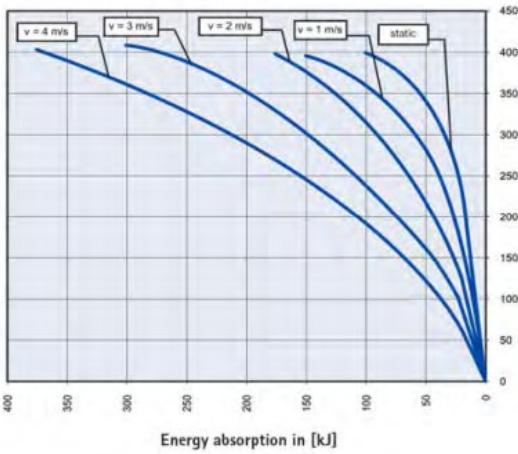
500 x 250 Energy absorption



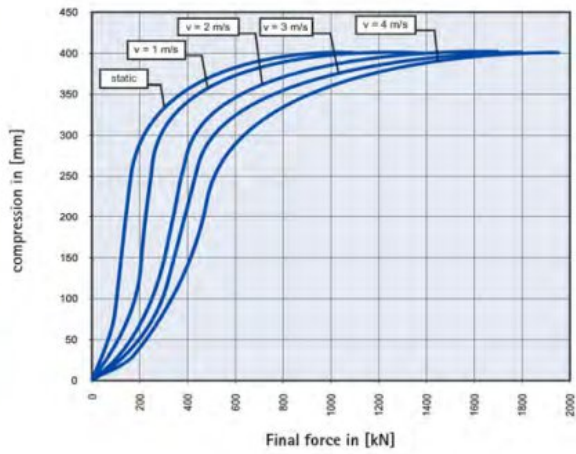
500 x 250 Final force



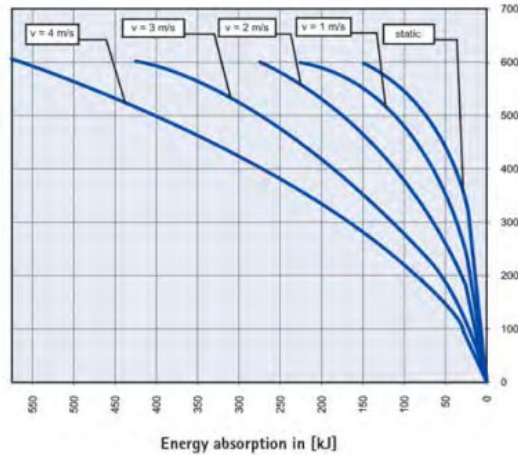
500 x 500 Energy absorption



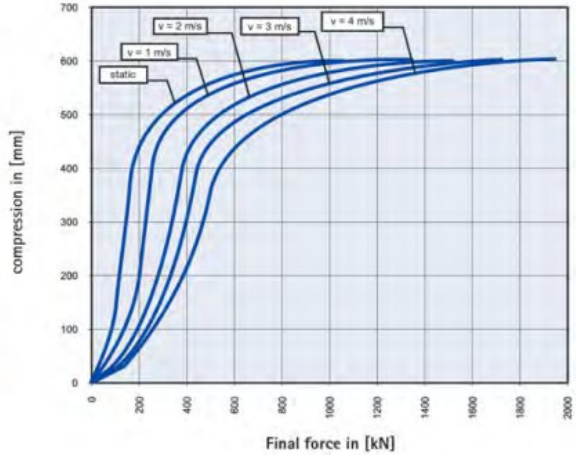
500 x 500 Final force



500 x 750 Energy absorption



500 x 750 Final force



Römer Fördertechnik GmbH / Nielandstrasse 53  
58300 Wetter / Ruhr / Germany

T +49 (0)2335. 8029-0  
F +49 (0)2335. 8029-29

eMail: info@roemer-foerdertechnik.de  
web: www.roemer-foerdertechnik.de

Änderung vorbehalten  
Modifications reserved 150311

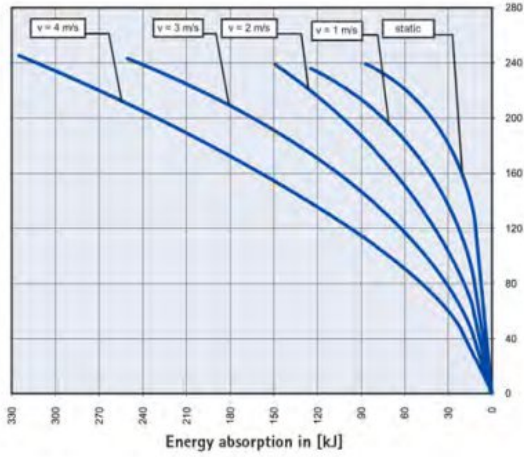
# Impact buffers / Cellular plastic buffers

Ø 600

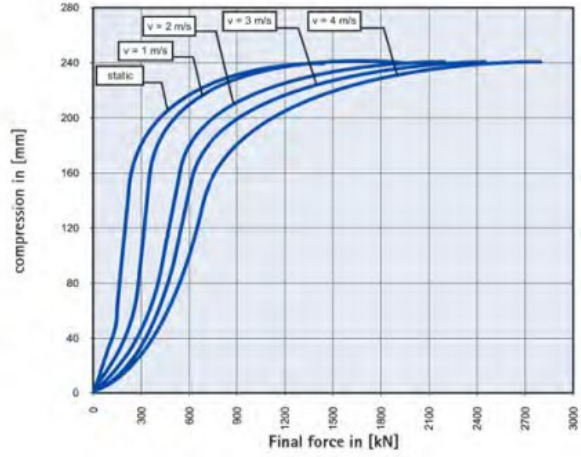


RÖMER Fördertechnik GmbH  
Nielandstraße 53 • D-58300 Wetter

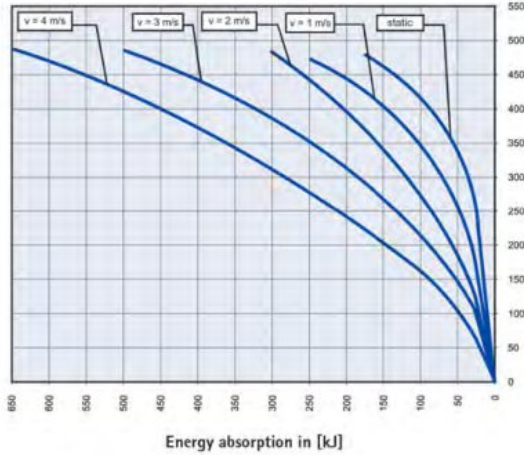
600 x 300 Energy absorption



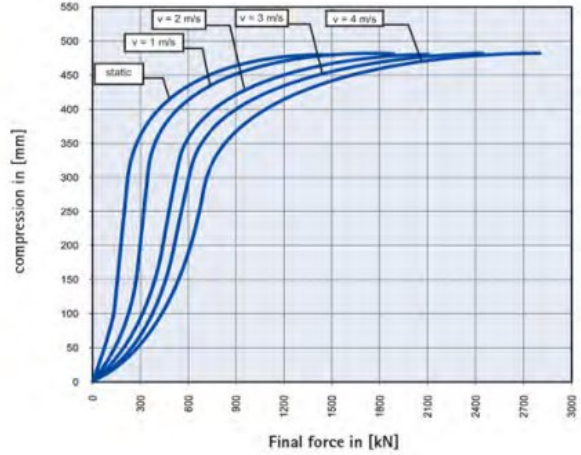
600 x 300 Final force



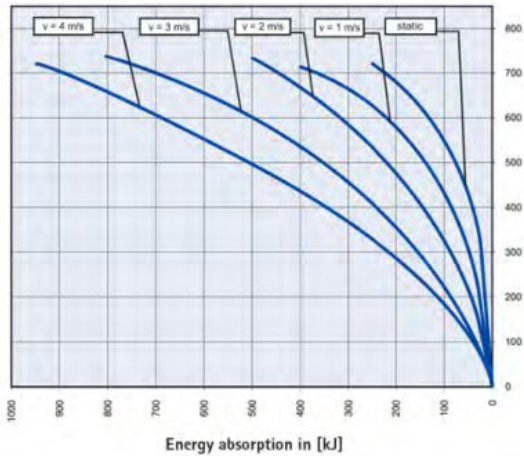
600 x 600 Energy absorption



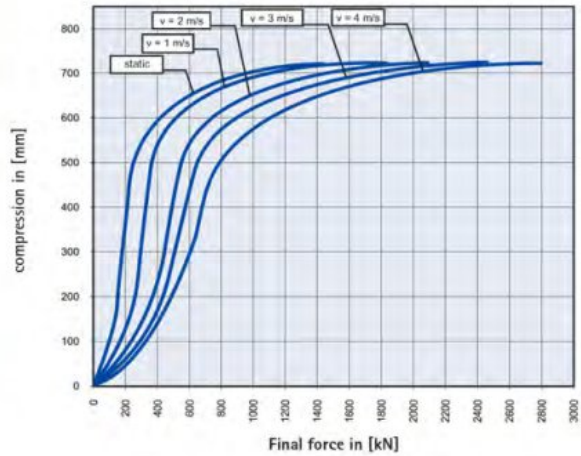
600 x 600 Final force



600 x 900 Energy absorption



600 x 900 Final force



Römer Fördertechnik GmbH / Nielandstrasse 53  
58300 Wetter / Ruhr / Germany

T +49 (0)2335. 8029-0  
F +49 (0)2335. 8029-29

eMail: info@roemer-foerdertechnik.de  
web: www.roemer-foerdertechnik.de

Änderung vorbehalten  
Modifications reserved 150311