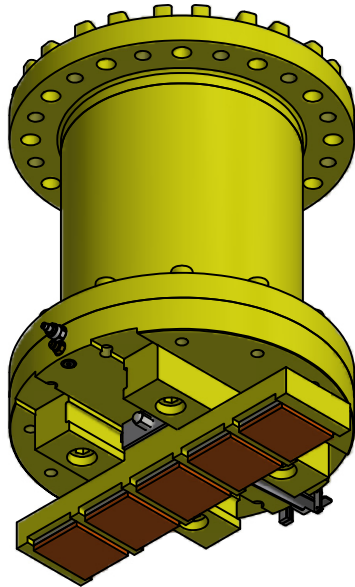


Inventor Drawing



FEATURE	CODE
Rail brake dynamic	RBHD
Single rail	STSR
Capacity (kN)	300
Coefficient of friction	040

<b>Example for ordering</b>	<b>RBHD-STSR-300-040</b>
-----------------------------	--------------------------

**TECHNICAL DATA**

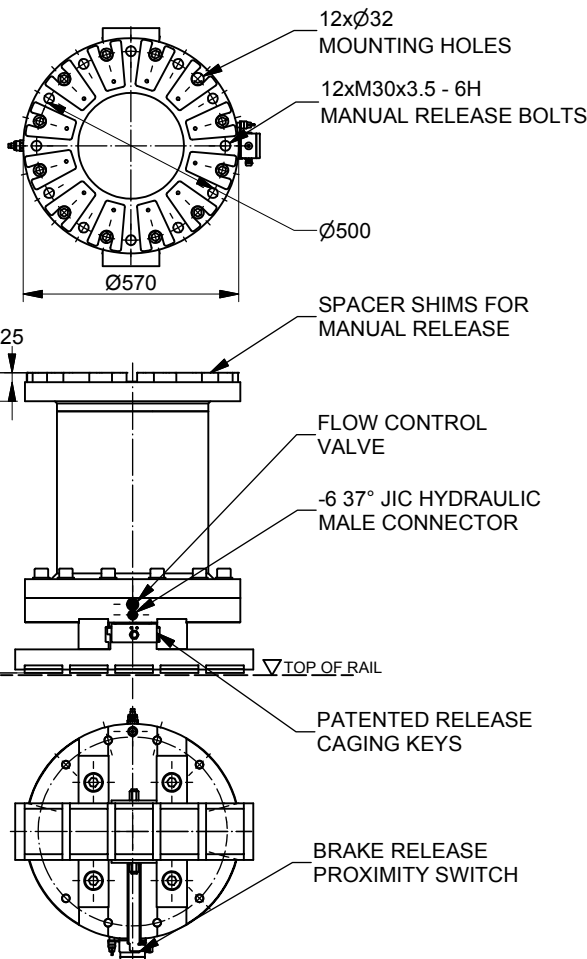
Motor size (kw)	2,2
Total available stroke (mm)	20
Full stroke oil volume (l)	1,6
Release pressure (nominal) (MPa)	12.7
Max. operating pressure (MPa)	15.6
Hydraulic connector	-6 37° JIC
Temperature range (°C)	-20 to +70
Mounting holes	12 x Ø32
Mounting bolts	12 x M30 GR 12.9
Weight with out oil (kg)	840

**OPERATING RANGE**

Retracted clearance "A"	Applied force kN	Holding force kN $\mu=0,40$
0	1031	412
<b>*</b> 6	868	347
8	814	326
10	759	304

**NOTES**

- Caging key allows the rail brake to be held in released position.
- International patent applies.
- All figures are nominal figures only.
- All dimensions are in millimeters .
- Shaded area identifies safe operating range.
- \* Nominal recommended retracted clearance = 6mm.
- Spring life @ nominal retracted clearance >2,000,000 cycles.



Document Template #710-101-62058

\*\* ALL TECHNICAL DATA IS SUBJECT TO CHANGE WITHOUT NOTICE \*\*  
Hillmar works have a fully registered ISO 9001-2008 quality assurance programme (QCB #01-1525)

C:\Vault\_Workspace\HILLMAR\HILLMAR\_PRODUCTION\02 STORM BRAKES\0700-210702008 RBHD02 SPC-SHT-RBHD\83332 RBHD-STSR-300-040.idw