

Hillmar

Hillmar Industries Ltd.

7371 Vantage Way
Delta, BC V4G 1C9
P:604 946-7115 F:604 946-0329
info@hillmar.com www.hillmar.com

**RAIL BRAKE RBHD
RBHD-STSR-200-040
SPECIFICATION SHEET
SLS & MKTG
ENGLISH**

Sheet Number:

Job Number:

Form Number:

229-212-83331PT

Company / Project Reference:

Date.:

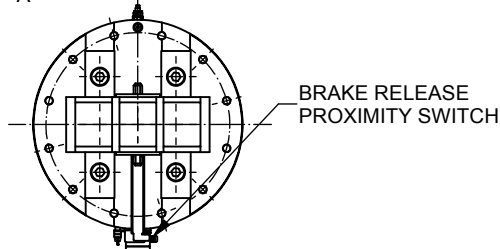
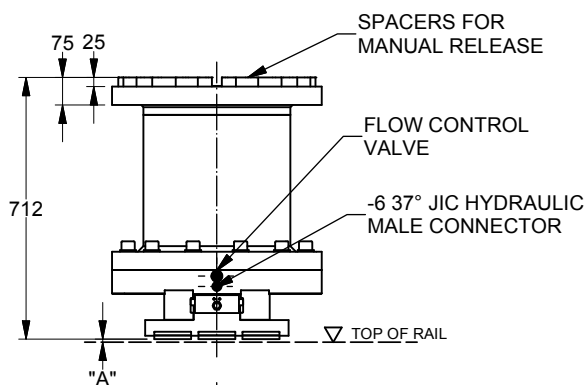
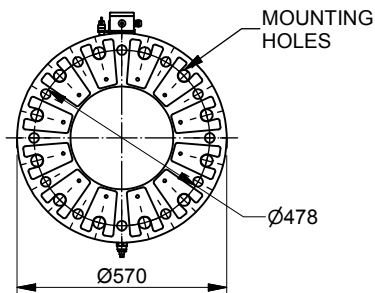
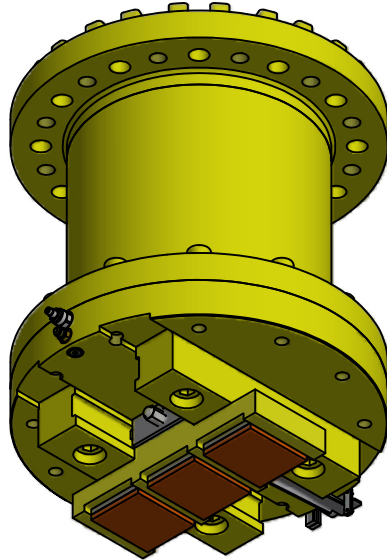
Page.:

1 OF 1

Document Package No.:

Rev.:

Inventor Drawing



FEATURE	CODE
Rail brake dynamic	RBHD
Single rail	STSR
Capacity (kN)	200
Coefficient of friction	040

Example for ordering	RBHD-STSR-200-040
----------------------	-------------------

TECHNICAL DATA

Motor size (kw)	2,2
Total available stroke (mm)	20
Full stroke oil volume (l)	1,6
Release pressure (nominal) (MPa)	9
Max. operating pressure (MPa)	11.5
Hydraulic connector	-6 37° JIC
Temperature range (°C)	-20 to +70
Mounting holes	12 x Ø32
Mounting bolts	12 x M30 GR 10,9
Weight with out oil (kg)	710

OPERATING RANGE

Retracted clearance "A"	Applied force kN	Holding force kN @ $\mu=0.40$
0	705	282
6	627	251
* 8	600	240
10	572	229

NOTES

Caging key allows the rail brake to be held in released position.

International patent applies.

All figures are nominal figures only.

All dimensions are in millimeters .

Shaded area identifies safe operating range.

* Nominal recommended retracted clearance = 8mm.

Spring life @ nominal retracted clearance >1,700,000 cycles.

Document Template #710-101-62058

** ALL TECHNICAL DATA IS SUBJECT TO CHANGE WITHOUT NOTICE **

Hillmar works have a fully registered ISO 9001-2008 quality assurance programme (QCB #01-1525)

C:\Vault_Workspace\HILLMAR\HILLMAR PRODUCTION\02 STORM BRAKES\0700-2\07002008 RBHD02 SPC-SHT-RBHD83331 RBHD-STSR-200-040.idw