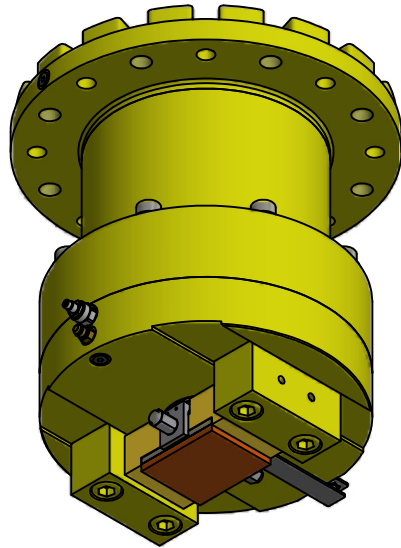


Inventor Drawing



FEATURE	CODE
Rail brake dynamic	RBHD
Single rail	STSR
Capacity (kN)	100
Coefficient of friction	040

<b>Example for ordering</b>	<b>RBHD-STSR-100-040</b>
-----------------------------	--------------------------

**TECHNICAL DATA**

Motor size (kw)	0.75
Total available stroke (mm)	20
Full stroke oil volume (l)	1.1
Release pressure (nominal) (MPa)	6.3
Max. operating pressure (MPa)	8.5
Temperature range (°C)	-20 to +70
Hydraulic connector	-6 37° JIC
Mounting holes	8 x Ø23
Mounting bolts	8 x M20 GR 8.8
Weight with out oil (kg)	320

**OPERATING RANGE**

Retracted clearance "A"	Applied force kN	Holding force kN @ $\mu=0.4$
0	340	136
6	301	120
* 8	287	115
10	273	109
12	260	104

**NOTES**

Caging key allows the rail brake to be held in released position.

International patent applies.

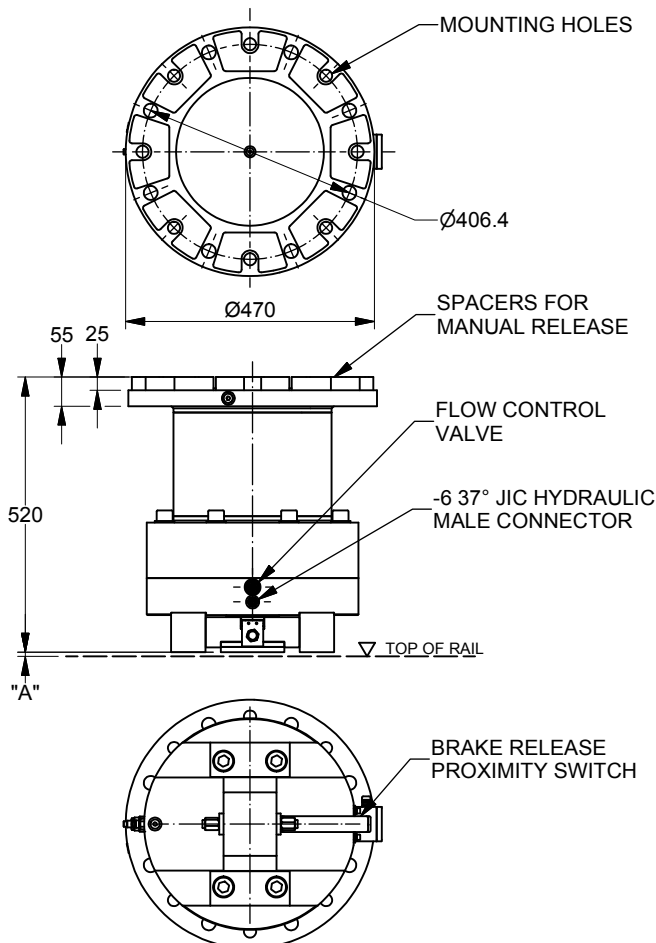
All figures are nominal figures only.

All dimensions are in millimeters .

Shaded area identifies safe operating range.

\* Nominal recommended retracted clearance = 8mm.

Spring life @ nominal retracted clearance >1,700,000 cycles.



Document Template #710-101-62058

\*\* ALL TECHNICAL DATA IS SUBJECT TO CHANGE WITHOUT NOTICE \*\*

Hillmar works have a fully registered ISO 9001-2008 quality assurance programme (QCB #01-1525)